

For Research Use Only

ARG2 Recombinant antibody, PBS Only (Capture)

Catalog Number: 84808-3-PBS



Basic Information

Catalog Number:

84808-3-PBS

Size:

1 mg/ml

Source:

Rabbit

Isotype:

IgG

Immunogen Catalog Number:

AG6609

GenBank Accession Number:

BC001350

GeneID (NCBI):

384

UNIPROT ID:

P78540

Full Name:

arginase, type II

Calculated MW:

39 kDa

Purification Method:

Protein A purification

CloneNo.:

242362G1

Applications

Tested Applications:

Cytometric bead array, Sandwich ELISA, Indirect ELISA, Sample test

Species Specificity:

human

Background Information

Storage

Storage:

Store at -80°C.

The product is shipped with ice packs. Upon receipt, store it immediately at -80°C

Storage Buffer:

PBS Only

For technical support and original validation data for this product please contact:

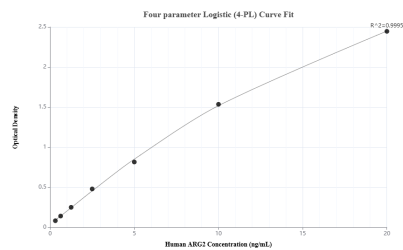
T: 4006900926

E: Proteintech-CN@ptglab.com

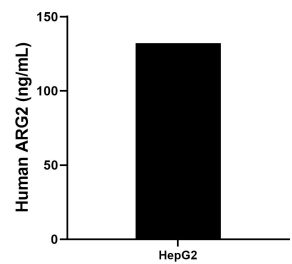
W: ptgcn.com

This product is exclusively available under Proteintech Group brand and is not available to purchase from any other manufacturer.

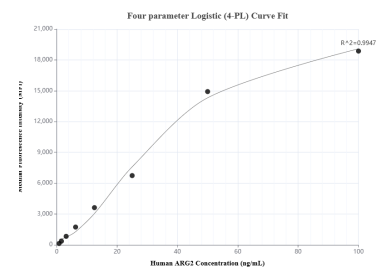
Selected Validation Data



Sandwich ELISA standard curve of MP01580-3, Human ARG2 Recombinant Matched Antibody Pair - PBS only. 84808-3-PBS was coated to a plate as the capture antibody and incubated with serial dilutions of standard Ag6609. 84808-4-PBS was HRP conjugated as the detection antibody. Range: 0.313-20 ng/mL



The mean ARG2 concentration was determined to be 132.20 ng/mL in HepG2 cell extract based on a 1.0 mg/mL extract load.



Cytometric bead array standard curve of MP01580-1, ARG2 Recombinant Matched Antibody Pair, PBS Only. Capture antibody: 84808-3-PBS. Detection antibody: 84808-2-PBS. Standard: Ag6609. Range: 0.781-100 ng/mL