

For Research Use Only

Mouse Endoglin/CD105 Recombinant antibody, PBS Only

Catalog Number: 84807-5-PBS



Basic Information

Catalog Number:

84807-5-PBS

Size:

1 mg/ml

Source:

Rabbit

Isotype:

IgG

GenBank Accession Number:

NM_007932.2

GeneID (NCBI):

13805

UNIPROT ID:

Q63961

Full Name:

endoglin

Calculated MW:

70kDa

Observed MW:

90 kDa

Purification Method:

Protein A purification

CloneNo.:

242305A11

Applications

Tested Applications:

WB, Indirect ELISA

Species Specificity:

mouse

Background Information

Endoglin (ENG, CD105) is a homodimeric cell membrane glycoprotein of 180 kDa, composed of disulphide-linked subunits of 90-95 kDa. Endoglin is a proliferation-associated and hypoxia-inducible protein mainly expressed on vascular endothelial cells. It acts as an accessory receptor for transforming growth factor beta (TGF- β) and is involved in vascular development and remodelling. The important role of Endoglin in angiogenesis and in tumor progression makes it an ideal target for antiangiogenic therapy and a good marker for tumor prognosis. (PMID: 1326540; 14528280; 21737653; 12773481)

Storage

Storage:

Store at -80°C.

The product is shipped with ice packs. Upon receipt, store it immediately at -80°C

Storage Buffer:

PBS Only

For technical support and original validation data for this product please contact:

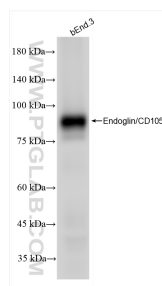
T: 4006900926

E: Proteintech-CN@ptglab.com

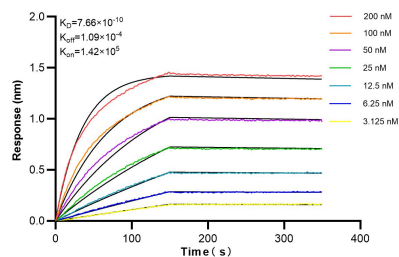
W: ptgcn.com

This product is exclusively available under Proteintech Group brand and is not available to purchase from any other manufacturer.

Selected Validation Data



bEnd.3 cells were subjected to SDS PAGE followed by western blot with 84807-5-RR (Endoglin/CD105 antibody) at dilution of 1:10000 incubated at room temperature for 1.5 hours. This data was developed using the same antibody clone with 84807-5-PBS in a different storage buffer formulation.



Biolayer interferometry (BLI) kinetic assays of 84807-5-RR against Mouse Endoglin/CD105 were performed. The affinity constant is 0.766 nM.