

For Research Use Only

# NDE1 Recombinant antibody, PBS Only (Capture)

Catalog Number: 84799-2-PBS



## Basic Information

<b>Catalog Number:</b> 84799-2-PBS	<b>GenBank Accession Number:</b> BC001421	<b>Purification Method:</b> Protein A purification
<b>Size:</b> 1 mg/ml	<b>GeneID (NCBI):</b> 54820	<b>CloneNo.:</b> 242340C11
<b>Source:</b> Rabbit	<b>UNIPROT ID:</b> Q9NXR1	
<b>Isotype:</b> IgG	<b>Full Name:</b> nudE nuclear distribution gene E homolog 1 (A. nidulans)	
<b>Immunogen Catalog Number:</b> AG0336	<b>Calculated MW:</b> 335 aa, 38 kDa	

## Applications

**Tested Applications:**  
Cytometric bead array, Sandwich ELISA, Indirect ELISA,  
Sample test

**Species Specificity:**  
human

## Background Information

### Storage

**Storage:**  
Store at -80°C.  
**The product is shipped with ice packs. Upon receipt, store it immediately at -80°C**

**Storage Buffer:**  
PBS Only

For technical support and original validation data for this product please contact:

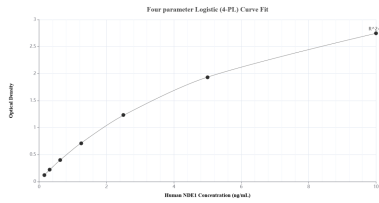
T: 4006900926

E: Proteintech-CN@ptglab.com

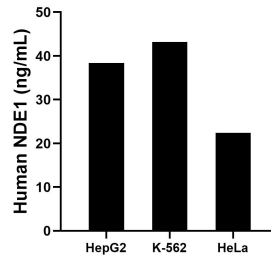
W: ptgcn.com

**This product is exclusively available under Proteintech Group brand and is not available to purchase from any other manufacturer.**

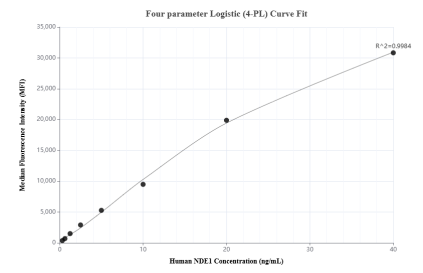
## Selected Validation Data



Sandwich ELISA standard curve of MP01589-1, Human NDE1 Recombinant Matched Antibody Pair - PBS only. 84799-2-PBS was coated to a plate as the capture antibody and incubated with serial dilutions of standard Ag0336. 84799-4-PBS was HRP conjugated as the detection antibody. Range: 0.156-10 ng/mL



The mean NDE1 concentration was determined to be 38.38 ng/mL in HepG2 cell extract based on a 2.50 mg/mL extract load, 43.20 ng/mL in K-562 cell extract based on a 1.00 mg/mL extract load and 22.42 ng/mL in HeLa cell extract based on a 1.50 mg/mL extract load.



Cytometric bead array standard curve of MP01589-1, NDE1 Recombinant Matched Antibody Pair, PBS Only. Capture antibody: 84799-2-PBS. Detection antibody: 84799-4-PBS. Standard: Ag0336. Range: 0.313-40 ng/mL