

For Research Use Only

# MCM3 Recombinant antibody, PBS Only (Capture)

Catalog Number: 84792-2-PBS



## Basic Information

Catalog Number:

84792-2-PBS

Size:

1 mg/ml

Source:

Rabbit

Isotype:

IgG

Immunogen Catalog Number:

AG7966

GenBank Accession Number:

BC001626

GeneID (NCBI):

4172

UNIPROT ID:

P25205

Full Name:

minichromosome maintenance  
complex component 3

Calculated MW:

91 kDa

Observed MW:

102-105 kDa

Purification Method:

Protein A purification

CloneNo.:

242103E4

## Applications

Tested Applications:

WB, IF/ICC, FC (Intra), Cytometric bead array, Indirect  
ELISA

Species Specificity:

human

## Background Information

MCM3, also named as HCC5, P1-MCM3, p102, RLF subunit beta and RLFB, belongs to the MCM family. MCM3 is essential for the initiation of DNA replication and is involved in ensuring that DNA replication is initiated precisely once per cell cycle (PMID: 33093917). The overexpression of MCM3 is related to proliferation of tumor cells (PMID: 31186514).

## Storage

Storage:

Store at -80°C.

The product is shipped with ice packs. Upon receipt, store it immediately at -80°C

Storage Buffer:

PBS Only

For technical support and original validation data for this product please contact:

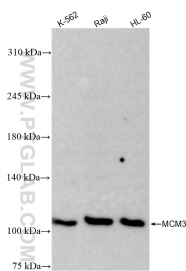
T: 4006900926

E: Proteintech-CN@ptglab.com

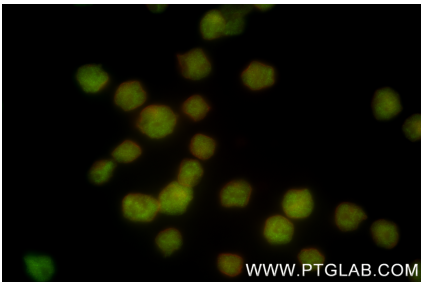
W: ptgcn.com

This product is exclusively available under Proteintech Group brand and is not available to purchase from any other manufacturer.

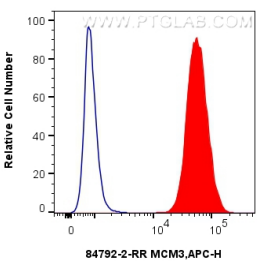
Selected Validation Data



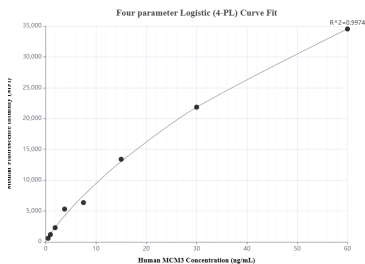
Various lysates were subjected to SDS PAGE followed by western blot with 84792-2-RR (MCM3 antibody) at dilution of 1:5000 incubated at room temperature for 1.5 hours. This data was developed using the same antibody clone with 84792-2-PBS in a different storage buffer formulation.



Immunofluorescent analysis of (4% PFA) fixed Raji cells using MCM3 antibody (84792-2-RR, Clone: 242103E4) at dilution of 1:500 and CoraLite®488-Conjugated Goat Anti-Rabbit IgG(H+L) (SA00013-2), CL594-Phalloidin (red). This data was developed using the same antibody clone with 84792-2-PBS in a different storage buffer formulation.



1x10<sup>6</sup> K-562 cells were intracellularly stained with 0.25 ug Mcm3 Recombinant Antibody (84792-2-RR, Clone:242103E4) and APC-Conjugated Goat Anti-Rabbit IgG(H+L) (red), or 0.25 ug Rabbit IgG Isotype Control Recombinant Antibody (98136-1-RR, Clone: 240953C9) (blue). Cells were fixed and permeabilized with Transcription Factor Staining Buffer Kit (PF00011). This data was developed using the same antibody clone with 84792-2-PBS in a different storage buffer



Cytometric bead array standard curve of MP01593-1, MCM3 Recombinant Matched Antibody Pair, PBS Only. Capture antibody: 84792-2-PBS. Detection antibody: 84792-3-PBS. Standard: Ag7966. Range: 0.469-60 ng/mL