

For Research Use Only

Mouse Siglec-E Recombinant antibody, PBS Only (Capture)

Catalog Number: 84790-2-PBS



Basic Information

Catalog Number: 84790-2-PBS	GenBank Accession Number: NM_031181.2	Purification Method: Protein A purification
Size: 1 mg/ml	GeneID (NCBI): 83382	CloneNo.: 242248H3
Source: Rabbit	UNIPROT ID: Q91Y57	
Isotype: IgG	Full Name: sialic acid binding Ig-like lectin E	
	Calculated MW: 52 kDa	
	Observed MW: 70-90 kDa	

Applications

Tested Applications:
WB, Cytometric bead array, Indirect ELISA

Species Specificity:
mouse

Background Information

Sialic acid-binding immunoglobulin-like lectins (SIGLECs) are a family of cell surface proteins belonging to the immunoglobulin superfamily that contain sialoside-binding N-terminal domains (PMID: PMID: 9498912; 22749793). Mouse Siglec E, also known as myeloid inhibitory siglec (MIS), is a mouse CD33-related siglec that contains three extracellular immunoglobulin-like domains, a transmembrane region and a cytoplasmic tail bearing two immunoreceptor tyrosine-based inhibitory motifs (ITIMs), which can recruit SHP-1 and SHP-2, two inhibitory regulators of immunoreceptor signal transduction (PMID: 11171044). Siglec-E is an inhibitory receptor and is expressed broadly on cells of innate immune cells including neutrophils, monocytes, macrophages, dendritic cells, and a subset of natural killer cells (PMID: 15048729; 31546700).

Storage

Storage:
Store at -80°C.
The product is shipped with ice packs. Upon receipt, store it immediately at -80°C

Storage Buffer:
PBS Only

For technical support and original validation data for this product please contact:

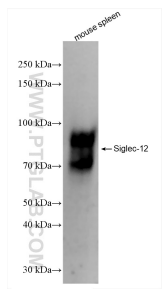
T: 4006900926

E: Proteintech-CN@ptglab.com

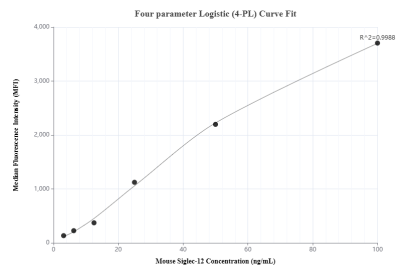
W: ptgcn.com

This product is exclusively available under Proteintech Group brand and is not available to purchase from any other manufacturer.

Selected Validation Data



mouse spleen tissue was subjected to SDS PAGE followed by western blot with 84790-2-RR (Siglec-E antibody) at dilution of 1:1000 incubated at room temperature for 1.5 hours. This data was developed using the same antibody clone with 84790-2-PBS in a different storage buffer formulation.



Cytometric bead array standard curve of MP01535-1, MOUSE Siglec-12 Recombinant Matched Antibody Pair, PBS Only. Capture antibody: 84790-2-PBS. Detection antibody: 84790-1-PBS. Standard: Eg2733. Range: 3.125-100 ng/mL