

For Research Use Only

# TNFRSF10B Recombinant antibody, PBS Only (Detector)

Catalog Number: 84784-1-PBS



## Basic Information

Catalog Number:

84784-1-PBS

Size:

1 mg/ml

Source:

Rabbit

Isotype:

IgG

GenBank Accession Number:

BC001281

GeneID (NCBI):

8795

UNIPROT ID:

O14763

Full Name:

tumor necrosis factor receptor  
superfamily, member 10b

Calculated MW:

48 kDa

Purification Method:

Protein A purification

CloneNo.:

242319B12

## Applications

Tested Applications:

Cytometric bead array, Sandwich ELISA, Indirect ELISA,  
Sample test

Species Specificity:

human

## Background Information

### Storage

Storage:

Store at -80°C.

The product is shipped with ice packs. Upon receipt, store it immediately at -80°C

Storage Buffer:

PBS Only

For technical support and original validation data for this product please contact:

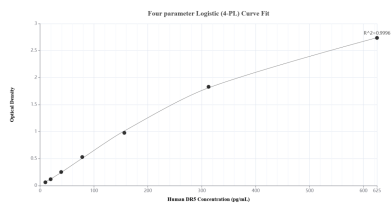
T: 4006900926

E: [Proteintech-CN@ptglab.com](mailto:Proteintech-CN@ptglab.com)

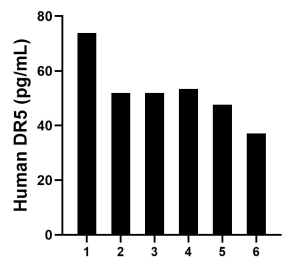
W: [ptgcn.com](http://ptgcn.com)

This product is exclusively available under Proteintech Group brand and is not available to purchase from any other manufacturer.

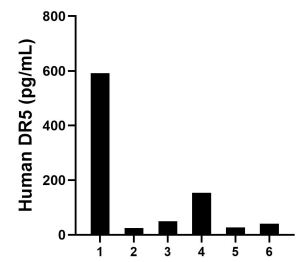
Selected Validation Data



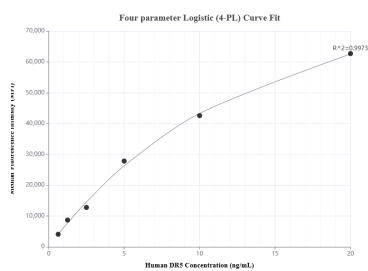
Sandwich ELISA standard curve of MP01541-1, Human DR5 Recombinant Matched Antibody Pair - PBS only. 84784-3-PBS was coated to a plate as the capture antibody and incubated with serial dilutions of standard Eg1648. 84784-1-PBS was HRP conjugated as the detection antibody. Range: 9.77-625 pg/mL



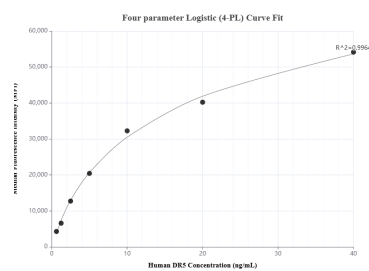
Plasma of six individual healthy human donors was measured. The DR5 concentration of detected samples was determined to be 52.6 pg/mL with a range of 37.1-73.8 pg/mL



Serum of six individual healthy human donors was measured. The DR5 concentration of detected samples was determined to be 147.8 pg/mL with a range of 25.4-591.3 pg/mL



Cytometric bead array standard curve of MP01541-1, DR5 Recombinant Matched Antibody Pair, PBS Only. Capture antibody: 84784-3-PBS. Detection antibody: 84784-1-PBS. Standard: Eg1648. Range: 0.625-20 ng/mL



Cytometric bead array standard curve of MP01541-2, DR5 Recombinant Matched Antibody Pair, PBS Only. Capture antibody: 84784-2-PBS. Detection antibody: 84784-1-PBS. Standard: Eg1648. Range: 0.625-40 ng/mL