

For Research Use Only

# Rat IGF1 Recombinant antibody, PBS Only (Capture)

Catalog Number: 84782-5-PBS



## Basic Information

Catalog Number: 84782-5-PBS	GenBank Accession Number: AAA41386	Purification Method: Protein A purification
Concentration: 1 mg/ml	GeneID (NCBI): 24482	CloneNo.: 241890G6
Source: Rabbit	UNIPROT ID: P08025	
Isotype: IgG	Full Name: insulin-like growth factor 1	
	Calculated MW: 14kd	
	Observed MW: 12 kDa	

## Applications

**Tested Applications:**  
WB, FC (Intra), Cytometric bead array, Indirect ELISA

**Species Specificity:**  
rat

## Background Information

IGF1, also named as IBP1, MGF, IGF-1A, and Somatomedin-C, belongs to the INS family. IGF1 is structurally and functionally related to INS but has a much higher growth-promoting activity. Altered expression or mutation of IGF-1 is associated with several human disorders, including type I diabetes and various forms of cancer. Defects in IGF1 are the cause of INS-like growth factor I deficiency (IGF1 deficiency) which is an autosomal recessive disorder characterized by growth retardation, sensorineural deafness, and mental retardation.

## Storage

**Storage:**  
Store at -80°C.  
**The product is shipped with ice packs. Upon receipt, store it immediately at -80°C**

**Storage Buffer:**  
PBS Only

For technical support and original validation data for this product please contact:

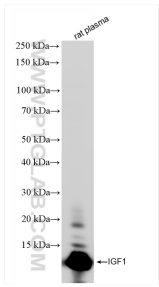
T: 4006900926

E: Proteintech-CN@ptglab.com

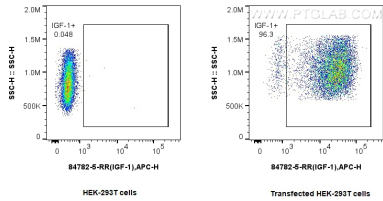
W: ptgcn.com

**This product is exclusively available under Proteintech Group brand and is not available to purchase from any other manufacturer.**

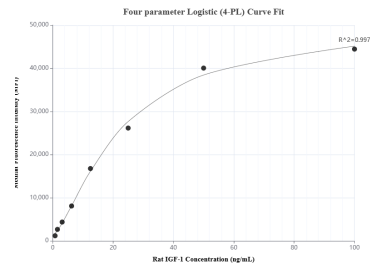
Selected Validation Data



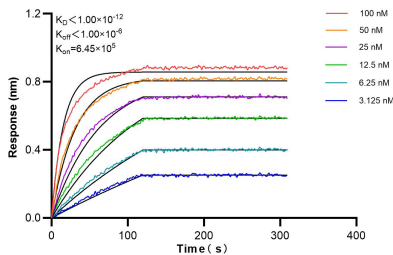
rat plasma were subjected to SDS PAGE followed by western blot with 84782-5-RR (IGF-1 antibody) at dilution of 1:10000 incubated at room temperature for 1.5 hours. This data was developed using the same antibody clone with 84782-5-PBS in a different storage buffer formulation.



1x10<sup>6</sup> HEK-293T cells or IGF1 Transfected HEK-293T cells were intracellularly stained with 0.25 ug IGF1 Recombinant antibody (84782-5-RR, Clone:241890G6) and Multi-rAb CoraLite ® Plus 647-Goat Anti-Rabbit Recombinant Secondary Antibody (H+L) (RGAR005). Cells were fixed with 4% PFA and permeabilized with Flow Cytometry Perm Buffer (PF00011-C). This data was developed using the same antibody clone with 84782-5-PBS in a different storage buffer formulation.



Cytometric bead array standard curve of MP01547-2, RAT IGF1 Recombinant Matched Antibody Pair, PBS Only. Capture antibody: 84782-5-PBS. Detection antibody: 84782-1-PBS. Standard: Eg1976. Range: 0.781-100 ng/mL



Biolayer interferometry (BLI) kinetic assays of 84782-5-RR against Rat IGF1 were performed. The affinity constant is below 1 pM.