

For Research Use Only

# MDM2 Recombinant antibody, PBS Only (Capture)

Catalog Number: 84780-5-PBS



## Basic Information

Catalog Number:

84780-5-PBS

Concentration:

1 mg/ml

Source:

Rabbit

Isotype:

IgG

Immunogen Catalog Number:

AG27255

GenBank Accession Number:

NM\_001145337.2

GeneID (NCBI):

4193

UNIPROT ID:

Q00987

Full Name:

Mdm2 p53 binding protein homolog  
(mouse)

Calculated MW:

55 kDa

Purification Method:

Protein A purification

CloneNo.:

242080C8

## Applications

Tested Applications:

Sandwich ELISA, Indirect ELISA, Sample test

Species Specificity:

human

## Background Information

### Storage

Storage:

Store at -80°C.

The product is shipped with ice packs. Upon receipt, store it immediately at -80°C

Storage Buffer:

PBS Only

For technical support and original validation data for this product please contact:

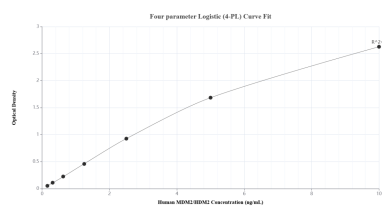
T: 4006900926

E: [Proteintech-CN@ptglab.com](mailto:Proteintech-CN@ptglab.com)

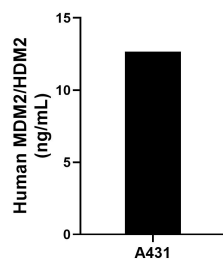
W: [ptgcn.com](http://ptgcn.com)

This product is exclusively available under Proteintech Group brand and is not available to purchase from any other manufacturer.

## Selected Validation Data



Sandwich ELISA standard curve of MP01554-3, Human MDM2/HDM2 Recombinant Matched Antibody Pair - PBS only. 84780-5-PBS was coated to a plate as the capture antibody and incubated with serial dilutions of standard Ag27255. 84780-4-PBS was HRP conjugated as the detection antibody. Range: 0.156-10 ng/mL



The mean MDM2/HDM2 concentration was determined to be 12.67 ng/mL in A431 cell extract based on a 1.30 mg/mL extract load.