

For Research Use Only

PSMD14/POH1 Recombinant antibody, PBS Only (Capture/Detector)

Catalog Number: 84767-1-PBS



Basic Information

Catalog Number:

84767-1-PBS

Size:

1 mg/ml

Source:

Rabbit

Isotype:

IgG

Immunogen Catalog Number:

AG2694

GenBank Accession Number:

BC009524

GeneID (NCBI):

10213

UNIPROT ID:

O00487

Full Name:

proteasome (prosome, macropain)

26S subunit, non-ATPase, 14

Calculated MW:

35 kDa

Purification Method:

Protein A purification

CloneNo.:

242160C12

Applications

Tested Applications:

Cytometric bead array, Sandwich ELISA, Indirect ELISA,
Sample test

Species Specificity:

human

Background Information

Storage

Storage:

Store at -80°C.

The product is shipped with ice packs. Upon receipt, store it immediately at -80°C

Storage Buffer:

PBS Only

For technical support and original validation data for this product please contact:

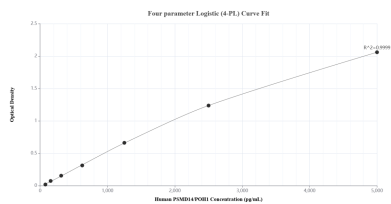
T: 4006900926

E: Proteintech-CN@ptglab.com

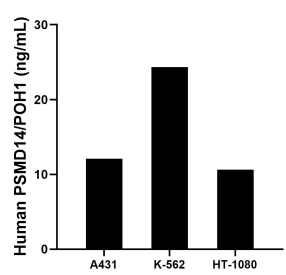
W: ptgcn.com

This product is exclusively available under Proteintech Group brand and is not available to purchase from any other manufacturer.

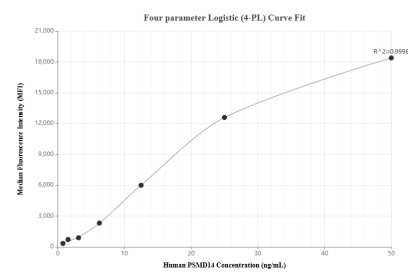
Selected Validation Data



Sandwich ELISA standard curve of MP01566-3, Human PSMD14/POH1 Recombinant Matched Antibody Pair - PBS only. 84767-1-PBS was coated to a plate as the capture antibody and incubated with serial dilutions of standard Ag2694. 84767-3-PBS was HRP conjugated as the detection antibody. Range: 78.1-5000 pg/mL



The mean PSMD14/POH1 concentration was determined to be 12.08 ng/mL in A431 cell extract based on a 1.30 mg/mL extract load, 24.32 ng/mL in K-562 cell extract based on a 2.40 mg/mL extract load and 10.64 ng/mL in HT-1080 cell extract based on a 1.40 mg/mL extract load.



Cytometric bead array standard curve of MP01566-2, PSMD14/POH1 Recombinant Matched Antibody Pair, PBS Only. Capture antibody: 84767-3-PBS. Detection antibody: 84767-1-PBS. Standard: Ag2694. Range: 0.781-50 ng/mL