

For Research Use Only

# SPTAN1 Recombinant antibody, PBS Only (Detector)

Catalog Number: 84761-3-PBS



## Basic Information

Catalog Number:

84761-3-PBS

Concentration:

1 mg/ml

Source:

Rabbit

Isotype:

IgG

Immunogen Catalog Number:

AG36472

GenBank Accession Number:

NM\_003127.3

GeneID (NCBI):

6709

UNIPROT ID:

Q13813

Full Name:

spectrin, alpha, non-erythrocytic 1  
(alpha-fodrin)

Calculated MW:

285kDa, 2472aa

Purification Method:

Protein A purification

CloneNo.:

242104D6

## Applications

Tested Applications:

Cytometric bead array, Sandwich ELISA, Indirect ELISA,  
Sample test

Species Specificity:

human

## Background Information

### Storage

Storage:

Store at -80°C.

**The product is shipped with ice packs. Upon receipt, store it immediately at -80°C**

Storage Buffer:

PBS only, pH7.3

For technical support and original validation data for this product please contact:

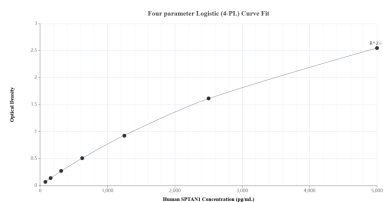
T: 4006900926

E: [Proteintech-CN@ptglab.com](mailto:Proteintech-CN@ptglab.com)

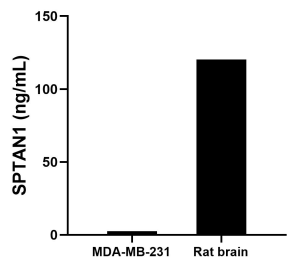
W: [ptgcn.com](http://ptgcn.com)

**This product is exclusively available under Proteintech Group brand and is not available to purchase from any other manufacturer.**

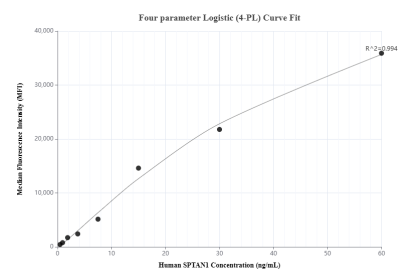
## Selected Validation Data



Sandwich ELISA standard curve of MP01560-3, Human SPTAN1 Recombinant Matched Antibody Pair - PBS only. 84761-4-PBS was coated to a plate as the capture antibody and incubated with serial dilutions of standard Ag36472. 84761-3-PBS was HRP conjugated as the detection antibody. Range: 78.1-5000 pg/mL



The mean SPTAN1 concentration was determined to be 2.5 ng/mL in MDA-MB-231 cell extract based on a 1.9 mg/mL extract load and 120.3 ng/mL in rat brain tissue extract based on a 1.6 mg/mL extract load.



Cytometric bead array standard curve of MP01560-2, SPTAN1 Recombinant Matched Antibody Pair, PBS Only. Capture antibody: 84761-2-PBS. Detection antibody: 84761-3-PBS. Standard: Ag36472. Range: 0.469-60 ng/mL