

For Research Use Only

# RB1CC1 Recombinant antibody, PBS Only (Detector)

Catalog Number: 84757-1-PBS



## Basic Information

Catalog Number:

84757-1-PBS

Concentration:

1 mg/ml

Source:

Rabbit

Isotype:

IgG

Immunogen Catalog Number:

AG10508

GenBank Accession Number:

BC017556

GeneID (NCBI):

9821

UNIPROT ID:

Q8TDY2

Full Name:

RB1-inducible coiled-coil 1

Calculated MW:

1594 aa, 183 kDa

Purification Method:

Protein A purification

CloneNo.:

242204A12

## Applications

Tested Applications:

Cytometric bead array, Sandwich ELISA, Indirect ELISA, Sample test

Species Specificity:

human

## Background Information

### Storage

Storage:

Store at -80°C.

The product is shipped with ice packs. Upon receipt, store it immediately at -80°C

Storage Buffer:

PBS Only

For technical support and original validation data for this product please contact:

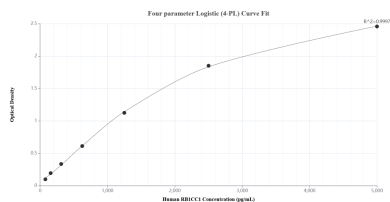
T: 4006900926

E: [Proteintech-CN@ptglab.com](mailto:Proteintech-CN@ptglab.com)

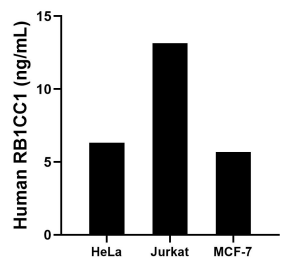
W: [ptgcn.com](http://ptgcn.com)

This product is exclusively available under Proteintech Group brand and is not available to purchase from any other manufacturer.

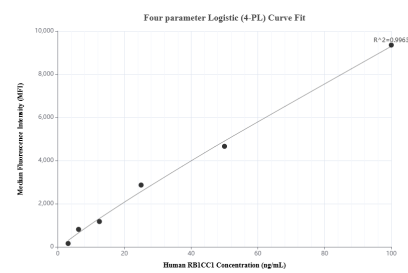
## Selected Validation Data



Sandwich ELISA standard curve of MP01563-1, Human RB1CC1 Recombinant Matched Antibody Pair - PBS only. 84757-2-PBS was coated to a plate as the capture antibody and incubated with serial dilutions of standard Ag10508. 84757-1-PBS was HRP conjugated as the detection antibody. Range: 78.1-5000 pg/mL



The mean RB1CC1 concentration was determined to be 6.3 ng/mL in HeLa cell extract based on a 1.0 mg/mL extract load, 13.2 ng/mL in Jurkat cell extract based on a 1.5 mg/mL extract load and 5.7 ng/mL in MCF-7 cell extract based on a 1.2 mg/mL extract load.



Cytometric bead array standard curve of MP01563-1, RB1CC1 Recombinant Matched Antibody Pair, PBS Only. Capture antibody: 84757-2-PBS. Detection antibody: 84757-1-PBS. Standard: Ag10508. Range: 3.125-100 ng/mL