

For Research Use Only

Mouse BTLA Recombinant antibody, PBS Only

Catalog Number: 84754-5-PBS



Basic Information

Catalog Number:

84754-5-PBS

Size:

1 mg/ml

Source:

Rabbit

Isotype:

IgG

GenBank Accession Number:

AA108964.1

GeneID (NCBI):

208154

UNIPROT ID:

Q32MV9

Full Name:

B and T Lymphocyte associated

Calculated MW:

34kDa

Observed MW:

50 kDa

Purification Method:

Protein A purification

CloneNo.:

242133E5

Applications

Tested Applications:

WB, IF/ICC, Indirect ELISA

Species Specificity:

mouse

Background Information

BTLA, or B and T lymphocyte attenuator, is a member of the CD28 superfamily and is a type I membrane glycoprotein identified as an inhibitory receptor (PMID: 33859648). BTLA is extensively expressed in lymph nodes, thymus, and spleen, with little or no expression in organs such as the heart, kidney, brain, and liver (PMID: 33859648). Among immune cells, BTLA is primarily expressed in B and T cells, with higher expression in B cells compared to T cells in the mouse spleen (PMID: 33859648). BTLA plays a crucial role in regulating stimulatory and inhibitory signals in immune responses.

Storage

Storage:

Store at -80°C.

The product is shipped with ice packs. Upon receipt, store it immediately at -80°C

Storage Buffer:

PBS Only

For technical support and original validation data for this product please contact:

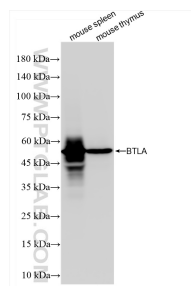
T: 4006900926

E: Proteintech-CN@ptglab.com

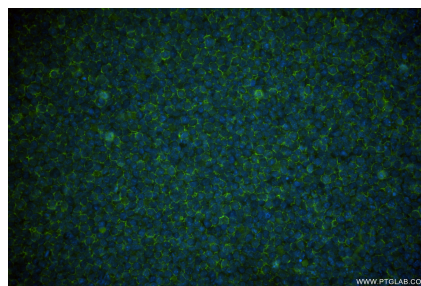
W: ptgcn.com

This product is exclusively available under Proteintech Group brand and is not available to purchase from any other manufacturer.

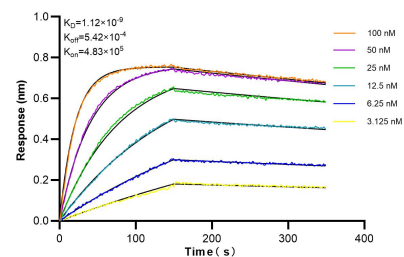
Selected Validation Data



Various lysates were subjected to SDS PAGE followed by western blot with 84754-5-RR (BTLA antibody) at dilution of 1:10000 incubated at room temperature for 1.5 hours. This data was developed using the same antibody clone with 84754-5-PBS in a different storage buffer formulation.



Immunofluorescent analysis of (4% PFA) fixed A20 cells using BTLA antibody (84754-5-RR, Clone: 242133E5) at dilution of 1:400 and CoraLite®488-Conjugated Goat Anti-Rabbit IgG(H+L) (SA00013-2). This data was developed using the same antibody clone with 84754-5-PBS in a different storage buffer formulation.



Biolayer interferometry (BLI) kinetic assays of 84754-5-RR against Mouse BTLA were performed. The affinity constant is 1.12 nM.