

For Research Use Only

# Mouse Glycophorin A Recombinant antibody, PBS Only (Detector)

Catalog Number: 84753-3-PBS



## Basic Information

Catalog Number:

84753-3-PBS

Size:

1 mg/ml

Source:

Rabbit

Isotype:

IgG

GenBank Accession Number:

NM\_010369.3

GeneID (NCBI):

14934

UNIPROT ID:

P14220

Full Name:

glycophorin A

Calculated MW:

18kDa

Purification Method:

Protein A purification

CloneNo.:

242129D4

## Applications

Tested Applications:

Cytometric bead array, Indirect ELISA

Species Specificity:

mouse

## Background Information

### Storage

Storage:

Store at -80°C.

The product is shipped with ice packs. Upon receipt, store it immediately at -80°C

Storage Buffer:

PBS Only

For technical support and original validation data for this product please contact:

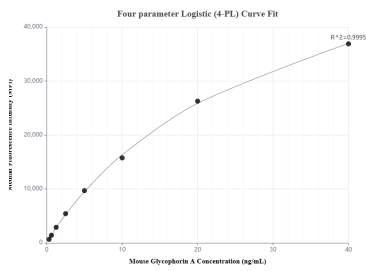
T: 4006900926

E: [Proteintech-CN@ptglab.com](mailto:Proteintech-CN@ptglab.com)

W: [ptgcn.com](http://ptgcn.com)

This product is exclusively available under Proteintech Group brand and is not available to purchase from any other manufacturer.

## Selected Validation Data



Cytometric bead array standard curve of MP01550-2, MOUSE Glycophorin A Recombinant Matched Antibody Pair, PBS Only. Capture antibody: 84753-1-PBS. Detection antibody: 84753-3-PBS. Standard: Eg1886. Range: 0.313-40 ng/mL