

For Research Use Only

CLEC10A/CD301 Recombinant antibody

Catalog Number: 84748-1-RR



Basic Information

Catalog Number:

84748-1-RR

Size:

1000 µg/ml

Source:

Rabbit

Isotype:

IgG

GenBank Accession Number:

BC039011

GeneID (NCBI):

10462

UNIPROT ID:

Q8IUN9

Full Name:

C-type lectin domain family 10, member A

Calculated MW:

316 aa, 35 kDa

Observed MW:

35 kDa

Purification Method:

Protein A purification

CloneNo.:

241857C3

Recommended Dilutions:

WB 1:2000-1:16000

Applications

Tested Applications:

WB, ELISA

Species Specificity:

human, mouse

Positive Controls:

WB : K-562 cells, Raji cells, mouse testis tissue

Background Information

C-type lectin domain family 10 member A (CLEC10A), also known as CD301, macrophage galactose-type C-type lectin (MGL), DC-asialoglyco protein receptor (DC-ASGP-R) or human macrophage lectin (HML), is a type II transmembrane glycoprotein having a calcium-dependent carbohydrate recognition domain (PMID: 8598452; 11919201; 11698450). CLEC10A is expressed exclusively by myeloid professional antigen-presenting cells such as immature dendritic cells (DCs) and alternatively activated macrophages (PMID: 16998493). CLEC10A is a marker for human CD1c+ DCs (cDC2) (PMID: 29755453). It functions as an endocytic receptor for glycosylated antigens (PMID: 11919201).

Storage

Storage:

Store at -20°C. Stable for one year after shipment.

Storage Buffer:

PBS with 0.02% sodium azide and 50% glycerol pH 7.3.

Aliquoting is unnecessary for -20°C storage

For technical support and original validation data for this product please contact:

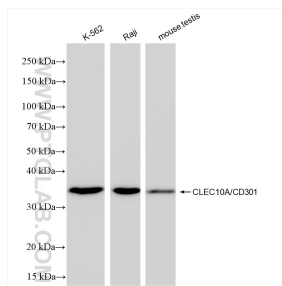
T: 4006900926

E: Proteintech-CN@ptglab.com

W: ptgcn.com

This product is exclusively available under Proteintech Group brand and is not available to purchase from any other manufacturer.

Selected Validation Data



Various lysates were subjected to SDS PAGE followed by western blot with 84748-1-RR (CLEC10A antibody) at dilution of 1:8000 incubated at room temperature for 1.5 hours.