

For Research Use Only

# C17orf68 Recombinant antibody

Catalog Number: 84737-1-RR



## Basic Information

Catalog Number:

84737-1-RR

Size:

1000 µg/ml

Source:

Rabbit

Isotype:

IgG

Immunogen Catalog Number:

AG28167

GenBank Accession Number:

BC111783

GeneID (NCBI):

80169

UNIPROT ID:

Q2NKJ3

Full Name:

chromosome 17 open reading frame

68

Calculated MW:

1217 aa, 135 kDa

Observed MW:

140/145 kDa

Purification Method:

Protein A purification

CloneNo.:

241152C6

Recommended Dilutions:

WB 1:500-1:2000

## Applications

Tested Applications:

WB, ELISA

Species Specificity:

human

Positive Controls:

WB : K-562 cells,

## Background Information

Conserved telomere maintenance component 1 (CTC1) is a subunit of an alpha accessory factor (AAF) that stimulates the activity of DNA polymerase-alpha-primase, the enzyme that initiates DNA replication (PMID: 19119139). CTC1 also functions in a telomere-associated complex with STN1 and TEN1 (PMID: 19854130).

## Storage

Storage:

Store at -20°C. Stable for one year after shipment.

Storage Buffer:

PBS with 0.02% sodium azide and 50% glycerol pH 7.3.

Aliquoting is unnecessary for -20°C storage

For technical support and original validation data for this product please contact:

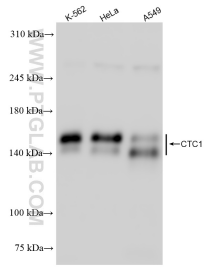
T: 4006900926

E: Proteintech-CN@ptglab.com

W: ptgcn.com

This product is exclusively available under Proteintech Group brand and is not available to purchase from any other manufacturer.

## Selected Validation Data



Various lysates were subjected to SDS PAGE followed by western blot with 84737-1-RR (C17orf68 antibody) at dilution of 1:1000 incubated at room temperature for 1.5 hours.