

For Research Use Only

EPB41L4B Recombinant antibody, PBS Only (Capture)

Catalog Number: 84732-2-PBS



Basic Information

Catalog Number: 84732-2-PBS	GenBank Accession Number: NM_00138562	Purification Method: Protein A purification
Concentration: 1 mg/ml	GeneID (NCBI): 54566	CloneNo.: 242186G4
Source: Rabbit	UNIPROT ID: Q9H329	
Isotype: IgG	Full Name: erythrocyte membrane protein band 4.1 like 4B	
Immunogen Catalog Number: AG36353	Calculated MW: 99kDa	
	Observed MW: 100 kDa	

Applications

Tested Applications:
WB, Cytometric bead array, Indirect ELISA

Species Specificity:
human, mouse

Background Information

The 4.1 proteins, encoded by the EPB41 (erythrocyte protein band 4.1) genes, are components of the cortical cytoskeleton underlying the cell membrane. The family of 4.1 proteins consists of the eponymous 4.1R protein first identified in erythrocytes (gene: EPB41), 4.1N (EPB41L1), 4.1G (EPB41L2), 4.1B (EPB41L3) as well as the less closely related members NBL4 (EPB41L4A), EHM2 (EPB41L4B) and EPB41L5 (EPB41L5). EHM2 is conspicuous in tumor cells with high migratory potential, such as metastatic melanoma and fibrosarcoma cells. In prostate cancer, EHM2 has been reported to be overexpressed and to diminish adhesion of prostate cancer cells to collagen. (PMID: 20860828)

Storage

Storage:
Store at -80°C.
The product is shipped with ice packs. Upon receipt, store it immediately at -80°C

Storage Buffer:
PBS Only

For technical support and original validation data for this product please contact:

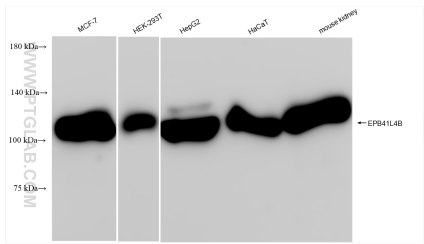
T: 4006900926

E: Proteintech-CN@ptglab.com

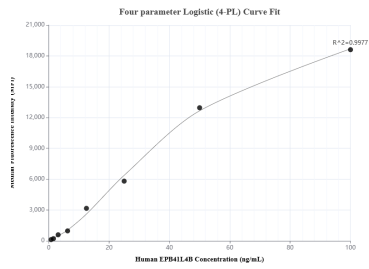
W: ptgcn.com

This product is exclusively available under Proteintech Group brand and is not available to purchase from any other manufacturer.

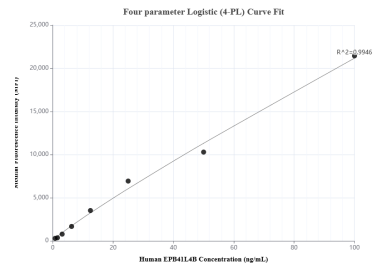
Selected Validation Data



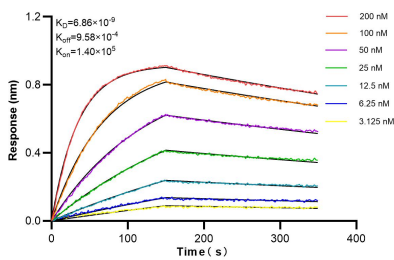
Various lysates were subjected to SDS PAGE followed by western blot with 84732-2-RR (EPB41L4B antibody) at dilution of 1:10000 incubated at room temperature for 1.5 hours. This data was developed using the same antibody clone with 84732-2-PBS in a different storage buffer formulation.



Cytometric bead array standard curve of MP01525-2, EPB41L4B Recombinant Matched Antibody Pair, PBS Only. Capture antibody: 84732-2-PBS. Detection antibody: 84732-3-PBS. Standard: Ag36353. Range: 0.781-100 ng/mL.



Cytometric bead array standard curve of MP01525-1, EPB41L4B Recombinant Matched Antibody Pair, PBS Only. Capture antibody: 84732-2-PBS. Detection antibody: 84732-1-PBS. Standard: Ag36353. Range: 0.781-100 ng/mL.



Bioluminescence resonance transfer (BLI) kinetic assays of 84732-2-RR against Human EPB41L4B were performed. The affinity constant is 6.86 nM.