

For Research Use Only

GP2 Recombinant antibody

Catalog Number: 84728-4-RR



Basic Information

Catalog Number:

84728-4-RR

Size:

1000 µg/ml

Source:

Rabbit

Isotype:

IgG

GenBank Accession Number:

NM_001007240.2

GeneID (NCBI):

2813

UNIPROT ID:

P55259-1

Full Name:

glycoprotein 2 (zymogen granule membrane)

Calculated MW:

59 kDa

Observed MW:

70 kDa

Purification Method:

Protein A purification

CloneNo.:

242300F9

Recommended Dilutions:

WB 1:1000-1:6000

Applications

Tested Applications:

WB, ELISA

Species Specificity:

human, mouse, rat

Positive Controls:

WB : mouse brain tissue, rat brain tissue

Background Information

Pancreatic secretory granule membrane major glycoprotein (GP2) is the most abundant membrane component of zymogen granules secreted by pancreatic acinar cells (PMID: 8190715). GP2 associates with the plasma membrane via glycosylphosphatidylinositol (GPI) linkage. It is released from the membrane of mature zymogen granules by an enzymatic mechanism (PMID: 2011597). GP2 plays a role in defense against adhesive and invasive commensal bacteria during intestinal inflammation (PMID: 33594081). GP2 is preferentially expressed in acinar cell carcinomas of the pancreas but the glycoprotein can rarely also be expressed in a variety of other tumor entities (PMID: 36137400). The apparent molecular weight of GP2 is 70-100 kDa, which is larger than the calculated molecular weight, due to glycosylation (PMID: 19627615; 30186250).

Storage

Storage:

Store at -20°C. Stable for one year after shipment.

Storage Buffer:

PBS with 0.02% sodium azide and 50% glycerol pH 7.3.

Aliquoting is unnecessary for -20°C storage

For technical support and original validation data for this product please contact:

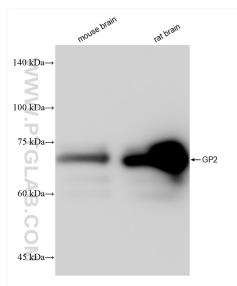
T: 4006900926

E: Proteintech-CN@ptglab.com

W: ptgcn.com

This product is exclusively available under Proteintech Group brand and is not available to purchase from any other manufacturer.

Selected Validation Data



mouse brain tissue were subjected to SDS PAGE followed by western blot with 84728-4-RR (GP2 antibody) at dilution of 1:3000 incubated at room temperature for 1.5 hours.