

For Research Use Only

# GP2 Recombinant antibody, PBS Only (Detector)

Catalog Number: 84728-3-PBS



## Basic Information

Catalog Number:

84728-3-PBS

Size:

1 mg/ml

Source:

Rabbit

Isotype:

IgG

GenBank Accession Number:

NM\_001007240.2

GeneID (NCBI):

2813

UNIPROT ID:

P55259-1

Full Name:

glycoprotein 2 (zymogen granule membrane)

Calculated MW:

59 kDa

Purification Method:

Protein A purification

CloneNo.:

242300H5

## Applications

Tested Applications:

Cytometric bead array, Sandwich ELISA, Indirect ELISA, Sample test

Species Specificity:

human

## Background Information

### Storage

Storage:

Store at -80°C.

The product is shipped with ice packs. Upon receipt, store it immediately at -80°C

Storage Buffer:

PBS Only

For technical support and original validation data for this product please contact:

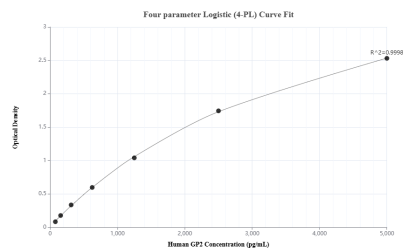
T: 4006900926

E: [Proteintech-CN@ptglab.com](mailto:Proteintech-CN@ptglab.com)

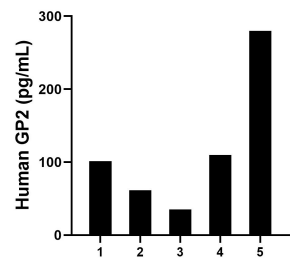
W: [ptgcn.com](http://ptgcn.com)

This product is exclusively available under Proteintech Group brand and is not available to purchase from any other manufacturer.

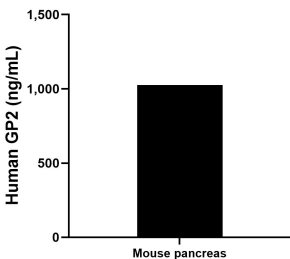
# Selected Validation Data



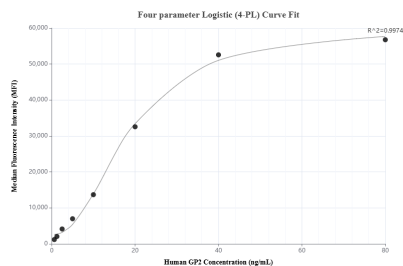
Sandwich ELISA standard curve of MP01513-2, Human GP2 Recombinant Matched Antibody Pair - PBS only. 84728-2-PBS was coated to a plate as the capture antibody and incubated with serial dilutions of standard Eg2446. 84728-3-PBS was HRP conjugated as the detection antibody. Range: 78.1-5000 pg/mL



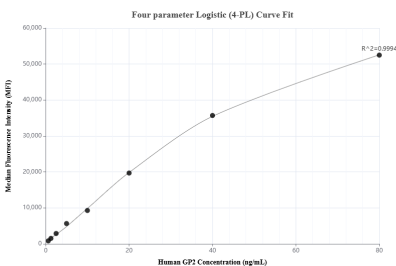
Serum of five individual healthy human donors was measured. The human GP2 concentration of detected samples was determined to be 117.6 pg/mL with a range of 35.0 - 279.9 pg/mL



The mean GP2 concentration was determined to be 1,025.47 ng/mL in mouse pancreas tissue extract based on a 2.3 mg/mL extract load.



Cytometric bead array standard curve of MP01513-1, GP2 Recombinant Matched Antibody Pair, PBS Only. Capture antibody: 84728-1-PBS. Detection antibody: 84728-3-PBS. Standard: Eg2446. Range: 0.625-80 ng/mL



Cytometric bead array standard curve of MP01513-2, GP2 Recombinant Matched Antibody Pair, PBS Only. Capture antibody: 84728-2-PBS. Detection antibody: 84728-3-PBS. Standard: Eg2446. Range: 0.625-80 ng/mL