

For Research Use Only

Plasma kallikrein/KLKB1 Recombinant antibody, PBS Only (Capture/Detector)

Catalog Number: 84726-1-PBS



Basic Information

Catalog Number:

84726-1-PBS

Size:

1 mg/ml

Source:

Rabbit

Isotype:

IgG

GenBank Accession Number:

GeneID (NCBI):

3818

UNIPROT ID:

P03952

Full Name:

kallikrein B, plasma (Fletcher factor)

1

Calculated MW:

71kDa

Purification Method:

Protein A purification

CloneNo.:

242019E10

Applications

Tested Applications:

Cytometric bead array, Sandwich ELISA, Indirect ELISA,
Sample test

Species Specificity:

human

Background Information

Storage

Storage:

Store at -80°C.

The product is shipped with ice packs. Upon receipt, store it immediately at -80°C

Storage Buffer:

PBS Only

For technical support and original validation data for this product please contact:

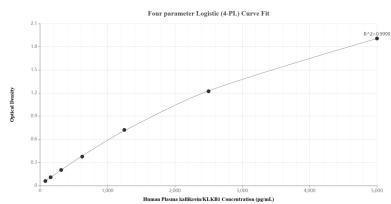
T: 4006900926

E: Proteintech-CN@ptglab.com

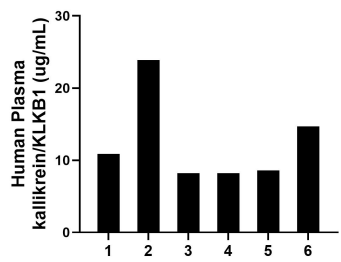
W: ptgcn.com

This product is exclusively available under Proteintech Group brand and is not available to purchase from any other manufacturer.

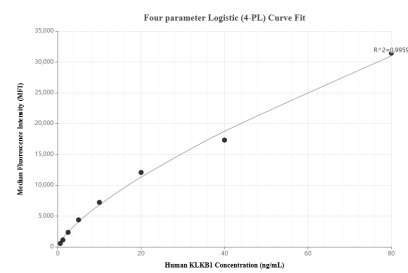
Selected Validation Data



Sandwich ELISA standard curve of MP01518-3, Human Plasma KLKB1 Recombinant Matched Antibody Pair - PBS only. 84726-2-PBS was coated to a plate as the capture antibody and incubated with serial dilutions of standard Eg1163. 84726-1-PBS was HRP conjugated as the detection antibody. Range: 78.1-5000 pg/mL



Serum of six individual healthy human donors was measured. The Plasma KLKB1 concentration of detected samples was determined to be 12.4 ug/mL with a range of 8.2-23.9 ug/mL



Cytometric bead array standard curve of MP01518-2, KLKB1 Recombinant Matched Antibody Pair, PBS Only. Capture antibody: 84726-1-PBS. Detection antibody: 84726-3-PBS. Standard: Eg1163. Range: 0.625-80 ng/mL