

For Research Use Only

C11orf68 Recombinant antibody

Catalog Number: 84725-5-RR



Basic Information

Catalog Number: 84725-5-RR	GenBank Accession Number: BC010512	Purification Method: Protein A purification
Concentration: 1000 µg/ml	GeneID (NCBI): 83638	CloneNo.: 242221C11
Source: Rabbit	UNIPROT ID: Q9H3H3	Recommended Dilutions: WB 1:2000-1:16000 IHC 1:200-1:800 IF/ICC 1:500-1:2000
Isotype: IgG	Full Name: chromosome 11 open reading frame 68	
Immunogen Catalog Number: AG36023	Observed MW: 35 kDa	

Applications

Tested Applications: WB, IHC, IF/ICC, FC (Intra), ELISA	Positive Controls: WB : A431 cells, PC-3 cells IHC : human stomach cancer tissue, IF/ICC : A431 cells,
Species Specificity: human	
Note-IHC: suggested antigen retrieval with TE buffer pH 9.0; (*) Alternatively, antigen retrieval may be performed with citrate buffer pH 6.0	

Background Information

BLES03 (basophilic leukemia-expressed protein 03) is a human protein of unknown function. Recent studies have shown that BLES03 is a novel eukaryotic phosphothreonine cleavage enzyme involved in the biosynthesis of dehydrogenated amino acids. The crystal structure of BLES03 has been resolved by single-wavelength anomalous scattering (SAD) with a resolution of 2.5 Å.

Storage

Storage:
Store at -20°C. Stable for one year after shipment.
Storage Buffer:
PBS with 0.02% sodium azide and 50% glycerol, pH7.3
Aliquoting is unnecessary for -20°C storage

For technical support and original validation data for this product please contact:

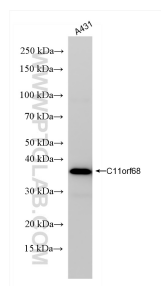
T: 4006900926

E: Proteintech-CN@ptglab.com

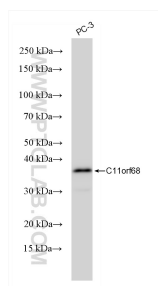
W: ptgcn.com

This product is exclusively available under Proteintech Group brand and is not available to purchase from any other manufacturer.

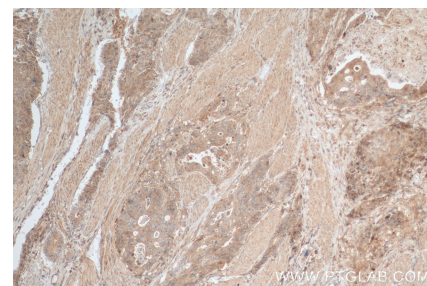
Selected Validation Data



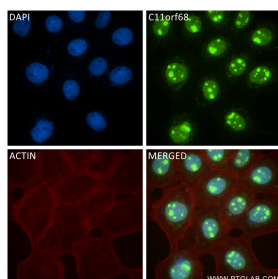
A431 cells were subjected to SDS PAGE followed by western blot with 84725-5-RR (C11orf68 antibody) at dilution of 1:8000 incubated at room temperature for 1.5 hours.



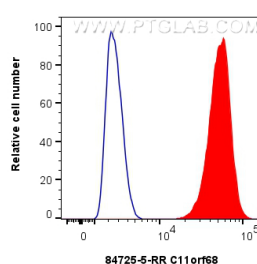
PC-3 cells were subjected to SDS PAGE followed by western blot with 84725-5-RR (C11orf68 antibody) at dilution of 1:8000 incubated at room temperature for 1.5 hours.



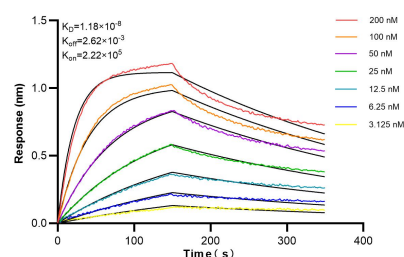
Immunohistochemical analysis of paraffin-embedded human stomach cancer tissue slide using 84725-5-RR (C11orf68 antibody) at dilution of 1:400 (under 10x lens). Heat mediated antigen retrieval with Tris-EDTA buffer (pH 9.0).



Immunofluorescent analysis of (4% PFA) fixed A431 cells using C11orf68 antibody (84725-5-RR, Clone: 242221C11) at dilution of 1:1000 and CoraLite®488-Conjugated Goat Anti-Rabbit IgG(H+L) (SA00013-2), CL594-Phalloidin (red).



1×10^6 U2OS cells were intracellularly stained with 0.25 μ g C11orf68 Recombinant antibody (84725-5-RR, Clone:242221C11) and CoraLite®488-Conjugated Goat Anti-Rabbit IgG(H+L) (SA00013-2) (red), or 0.25 μ g Rabbit IgG Isotype Control RecAb (98136-1-RR, Clone: 240953C9) (blue). Cells were fixed and permeabilized with Transcription Factor Staining Buffer Kit (PF00011).



Bilayer interferometry (BLI) kinetic assays of 84725-5-RR against Human C11orf68 were performed. The affinity constant is 11.8 nM.