

For Research Use Only

# C11orf68 Recombinant antibody, PBS Only

Catalog Number: 84725-5-PBS



## Basic Information

Catalog Number:

84725-5-PBS

Concentration:

1 mg/ml

Source:

Rabbit

Isotype:

IgG

Immunogen Catalog Number:

AG36023

GenBank Accession Number:

BC010512

GeneID (NCBI):

83638

UNIPROT ID:

Q9H3H3

Full Name:

chromosome 11 open reading frame

68

Observed MW:

35 kDa

Purification Method:

Protein A purification

CloneNo.:

242221C11

## Applications

Tested Applications:

WB, IHC, IF/ICC, FC (Intra), Indirect ELISA

Species Specificity:

human

## Background Information

BLES03 (basophilic leukemia-expressed protein 03) is a human protein of unknown function. Recent studies have shown that BLES03 is a novel eukaryotic phosphothreonine cleavage enzyme involved in the biosynthesis of dehydrogenated amino acids. The crystal structure of BLES03 has been resolved by single-wavelength anomalous scattering (SAD) with a resolution of 2.5 Å.

## Storage

Storage:

Store at -80°C.

The product is shipped with ice packs. Upon receipt, store it immediately at -80°C

Storage Buffer:

PBS only, pH7.3

For technical support and original validation data for this product please contact:

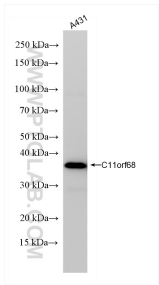
T: 4006900926

E: [Proteintech-CN@ptglab.com](mailto:Proteintech-CN@ptglab.com)

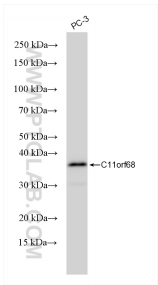
W: [ptgcn.com](http://ptgcn.com)

This product is exclusively available under Proteintech Group brand and is not available to purchase from any other manufacturer.

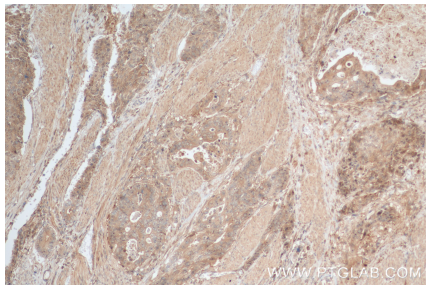
Selected Validation Data



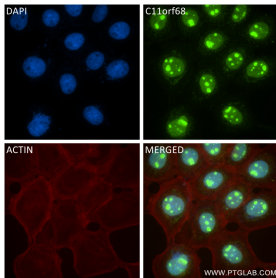
A431 cells were subjected to SDS PAGE followed by western blot with 84725-5-RR (C11orf68 antibody) at dilution of 1:8000 incubated at room temperature for 1.5 hours. This data was developed using the same antibody clone with 84725-5-PBS in a different storage buffer formulation.



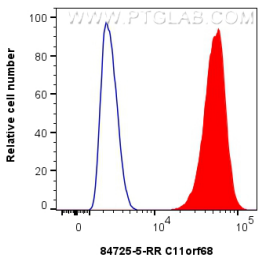
PC-3 cells were subjected to SDS PAGE followed by western blot with 84725-5-RR (C11orf68 antibody) at dilution of 1:8000 incubated at room temperature for 1.5 hours. This data was developed using the same antibody clone with 84725-5-PBS in a different storage buffer formulation.



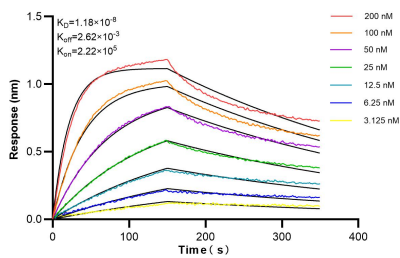
Immunohistochemical analysis of paraffin-embedded human stomach cancer tissue slide using 84725-5-RR (C11orf68 antibody) at dilution of 1:400 (under 10x lens). Heat mediated antigen retrieval with Tris-EDTA buffer (pH 9.0). This data was developed using the same antibody clone with 84725-5-PBS in a different storage buffer formulation.



Immunofluorescent analysis of (4% PFA) fixed A431 cells using C11orf68 antibody (84725-5-RR, Clone: 242221C11) at dilution of 1:1000 and CoraLite®488-Conjugated Goat Anti-Rabbit IgG(H+L) (SA00013-2), CL594-Phalloidin (red). This data was developed using the same antibody clone with 84725-5-PBS in a different storage buffer formulation.



1x10<sup>6</sup> U2OS cells were intracellularly stained with 0.25 ug C11orf68 Recombinant antibody (84725-5-RR, Clone:242221C11) and CoraLite®488-Conjugated Goat Anti-Rabbit IgG(H+L) (SA00013-2)(red), or 0.25 ug Rabbit IgG Isotype Control RecAb (98136-1-RR, Clone: 240953C9) (blue). Cells were fixed and permeabilized with Transcription Factor Staining Buffer Kit (PF00011). This data was developed using the same antibody clone with 84725-5-PBS in a different storage buffer



Biolayer interferometry (BLI) kinetic assays of 84725-5-RR against Human C11orf68 were performed. The affinity constant is 11.8 nM.