

For Research Use Only

# MGEA5 Recombinant antibody, PBS Only (Detector)

Catalog Number: 84722-3-PBS



## Basic Information

Catalog Number:

84722-3-PBS

Concentration:

1 mg/ml

Source:

Rabbit

Isotype:

IgG

Immunogen Catalog Number:

AG6405

GenBank Accession Number:

BC039583

GeneID (NCBI):

10724

UNIPROT ID:

O60502

Full Name:

meningioma expressed antigen 5 (hyaluronidase)

Calculated MW:

103 kDa

Purification Method:

Protein A purification

CloneNo.:

242263E4

## Applications

Tested Applications:

Cytometric bead array, Sandwich ELISA, Indirect ELISA, Sample test

Species Specificity:

human

## Background Information

### Storage

Storage:

Store at -80°C.

The product is shipped with ice packs. Upon receipt, store it immediately at -80°C

Storage Buffer:

PBS Only

For technical support and original validation data for this product please contact:

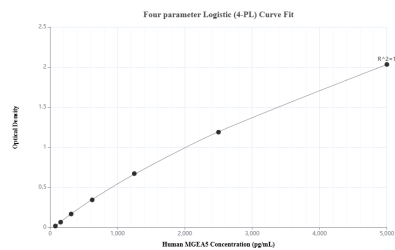
T: 4006900926

E: [Proteintech-CN@ptglab.com](mailto:Proteintech-CN@ptglab.com)

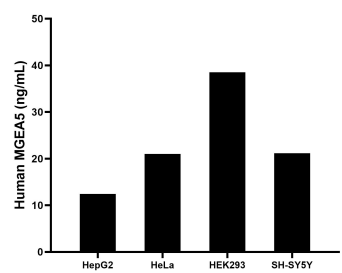
W: [ptgcn.com](http://ptgcn.com)

This product is exclusively available under Proteintech Group brand and is not available to purchase from any other manufacturer.

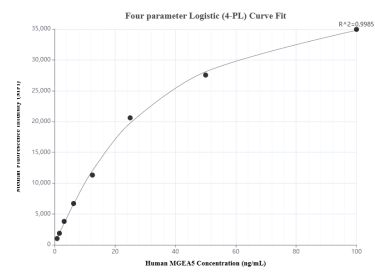
## Selected Validation Data



Sandwich ELISA standard curve of MP01507-2, Human MGEA5 Recombinant Matched Antibody Pair - PBS only. 84722-2-PBS was coated to a plate as the capture antibody and incubated with serial dilutions of standard Ag6405. 84722-3-PBS was HRP conjugated as the detection antibody. Range: 78.1-5000 pg/mL



The mean MGEA5 concentration was determined to be 12.41 ng/mL in HepG2 cell extract based on a 2.3 mg/mL extract load, 21.01 ng/mL in HeLa cell extract based on a 1.0 mg/mL extract load, 38.53 ng/mL in HEK-293 cell extract based on a 1.2 mg/mL extract load and 21.16 ng/mL in SH-SY5Y cell extract based on a 1.0 mg/mL extract load.



Cytometric bead array standard curve of MP01507-2, MGEA5 Recombinant Matched Antibody Pair, PBS Only. Capture antibody: 84722-2-PBS. Detection antibody: 84722-3-PBS. Standard: Ag6405. Range: 0.781-100 ng/mL