

For Research Use Only

# JAM-A/CD321 Recombinant antibody, PBS Only (Detector)

Catalog Number: 84720-3-PBS



## Basic Information

Catalog Number:

84720-3-PBS

Concentration:

1 mg/ml

Source:

Rabbit

Isotype:

IgG

GenBank Accession Number:

NM\_016946.6

GeneID (NCBI):

50848

UNIPROT ID:

Q9Y624-1

Full Name:

F11 receptor

Calculated MW:

33kDa

Purification Method:

Protein A purification

CloneNo.:

242290F8

## Applications

Tested Applications:

Cytometric bead array, Sandwich ELISA, Indirect ELISA,  
Sample test

Species Specificity:

human

## Background Information

### Storage

Storage:

Store at -80°C.

**The product is shipped with ice packs. Upon receipt, store it immediately at -80°C**

Storage Buffer:

PBS Only

For technical support and original validation data for this product please contact:

T: 4006900926

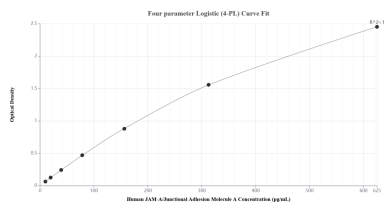
E: [Proteintech-CN@ptglab.com](mailto:Proteintech-CN@ptglab.com)

W: [ptgcn.com](http://ptgcn.com)

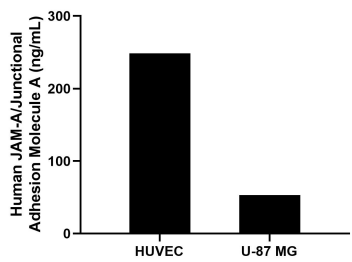
**This product is exclusively available under Proteintech Group brand and is not available to purchase from any other manufacturer.**



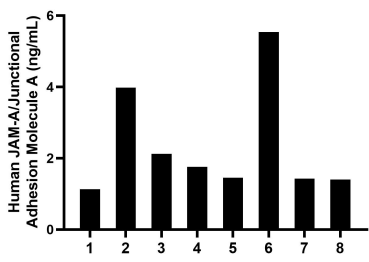
## Selected Validation Data



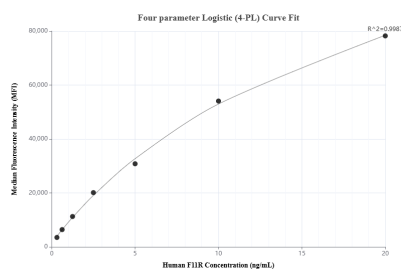
Sandwich ELISA standard curve of MP00247-2, Human JAM-A/Junctional Adhesion Molecule A Recombinant Matched Antibody Pair - PBS only. 84720-1-PBS was coated to a plate as the capture antibody and incubated with serial dilutions of standard Eg1372. 84720-3-PBS was HRP conjugated as the detection antibody. Range: 9.77-625 pg/mL.



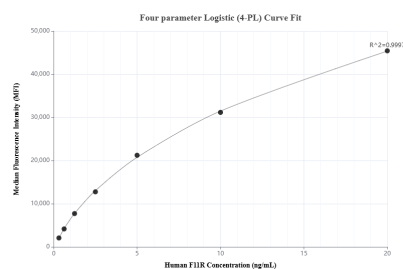
The mean JAM-A/Junctional Adhesion Molecule A concentration was determined to be 248.8 ng/mL in HUVEC cell extract based on a 1.1 mg/mL extract load and 53.3 ng/mL in U-87 MG cell extract based on a 2.0 mg/mL extract load.



Serum of eight individual healthy human donors was measured. The JAM-A/Junctional Adhesion Molecule A concentration of detected samples was determined to be 2.4 ng/mL with a range of 1.1-5.5 ng/mL.



Cytometric bead array standard curve of MP00247-2, F11R Recombinant Matched Antibody Pair, PBS Only. Capture antibody: 84720-1-PBS. Detection antibody: 84720-3-PBS. Standard: Eg1372. Range: 0.313-20 ng/mL.



Cytometric bead array standard curve of MP00247-3, F11R Recombinant Matched Antibody Pair, PBS Only. Capture antibody: 84720-2-PBS. Detection antibody: 84720-3-PBS. Standard: Eg1372. Range: 0.313-20 ng/mL.