

For Research Use Only

JAM-A/CD321 Recombinant antibody, PBS Only (Capture)

Catalog Number: 84720-2-PBS



Basic Information

Catalog Number:

84720-2-PBS

Concentration:

1 mg/ml

Source:

Rabbit

Isotype:

IgG

GenBank Accession Number:

NM_016946.6

GeneID (NCBI):

50848

UNIPROT ID:

Q9Y624-1

Full Name:

F11 receptor

Calculated MW:

33kDa

Observed MW:

38 kDa

Purification Method:

Protein A purification

CloneNo.:

242290C2

Applications

Tested Applications:

WB, Cytometric bead array, Indirect ELISA

Species Specificity:

human

Background Information

The F11 receptor (F11R) was first identified in human platelets as a 32/35 kDa protein duplex that serves as the receptor for a functional antibody that activates platelets. It seems to play a role in epithelial tight junction formation. It was also reported to function as a receptor for reovirus and a ligand for the integrin LFA1.

Storage

Storage:

Store at -80°C.

The product is shipped with ice packs. Upon receipt, store it immediately at -80°C

Storage Buffer:

PBS Only

For technical support and original validation data for this product please contact:

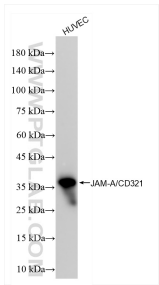
T: 4006900926

E: Proteintech-CN@ptglab.com

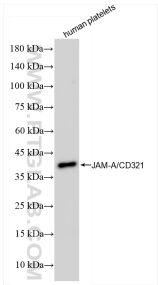
W: ptgcn.com

This product is exclusively available under Proteintech Group brand and is not available to purchase from any other manufacturer.

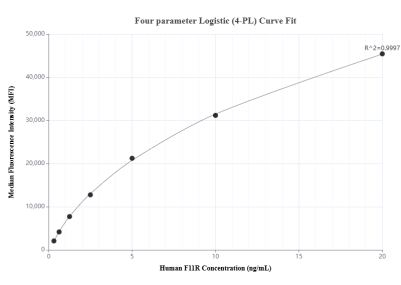
Selected Validation Data



HUVEC cells were subjected to SDS PAGE followed by western blot with 84720-2-RR (JAM-A/Junctional Adhesion Molecule A antibody) at dilution of 1:10000 incubated at room temperature for 1.5 hours. This data was developed using the same antibody clone with 84720-2-PBS in a different storage buffer formulation.



human peripheral blood platelets were subjected to SDS PAGE followed by western blot with 84720-2-RR (JAM-A/Junctional Adhesion Molecule A antibody) at dilution of 1:10000 incubated at room temperature for 1.5 hours. This data was developed using the same antibody clone with 84720-2-PBS in a different storage buffer formulation.



Cytometric bead array standard curve of MP00247-3, F11R Recombinant Matched Antibody Pair, PBS Only. Capture antibody: 84720-2-PBS. Detection antibody: 84720-3-PBS. Standard: Eg1372. Range: 0.313-20 ng/mL.