

For Research Use Only

AGGF1 Recombinant antibody

Catalog Number: 84715-3-RR



Basic Information

Catalog Number:

84715-3-RR

Concentration:

1000 µg/ml

Source:

Rabbit

Isotype:

IgG

Immunogen Catalog Number:

AG2497

GenBank Accession Number:

BC029382

GeneID (NCBI):

55109

UNIPROT ID:

Q8N302

Full Name:

angiogenic factor with G patch and
FHA domains 1

Calculated MW:

714 aa, 81 kDa

Observed MW:

84-100 kDa

Purification Method:

Protein A purification

CloneNo.:

242264E9

Recommended Dilutions:

WB 1:1000-1:8000

Applications

Tested Applications:

WB, ELISA

Species Specificity:

human

Positive Controls:

WB : HEK-293 cells, HCT 116 cells, HeLa cells, L02 cells

Background Information

The angiogenic factor gene, AGGF1 (or VG5Q), is identified as a candidate susceptibility gene for Klippel-Trenaunay syndrome (KTS) which is a severe congenital disorder characterized by capillary malformations, venous malformations or varicose veins, and hypertrophy of the affected tissues. AGGF1 protein can bind to endothelial cells and promote cell proliferation. AGGF1 shows strong expression in blood vessels and is secreted as vessel formation is initiated. Regulation of AGGF1 by GATA1 may play roles in endothelial cell biology and angiogenesis.

Storage

Storage:

Store at -20°C. Stable for one year after shipment.

Storage Buffer:

PBS with 0.02% sodium azide and 50% glycerol, pH7.3

Aliquoting is unnecessary for -20°C storage

For technical support and original validation data for this product please contact:

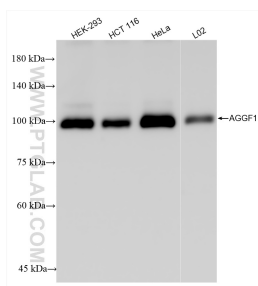
T: 4006900926

E: Proteintech-CN@ptglab.com

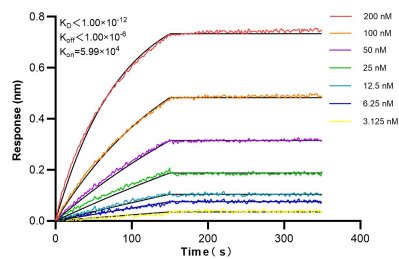
W: ptgcn.com

This product is exclusively available under Proteintech Group brand and is not available to purchase from any other manufacturer.

Selected Validation Data



Various lysates were subjected to SDS PAGE followed by western blot with 84715-3-RR (AGGF1 antibody) at dilution of 1:4000 incubated at room temperature for 1.5 hours.



Biolayer interferometry (BLI) kinetic assays of 84715-3-RR against Human AGGF1 were performed. The affinity constant is below 1 pM.