

For Research Use Only

TOLLIP Recombinant antibody, PBS Only (Detector)

Catalog Number: 84711-1-PBS



Basic Information

Catalog Number:

84711-1-PBS

Size:

1 mg/ml

Source:

Rabbit

Isotype:

IgG

Immunogen Catalog Number:

AG1864

GenBank Accession Number:

BC012057

GeneID (NCBI):

54472

UNIPROT ID:

Q9H0E2

Full Name:

toll interacting protein

Calculated MW:

30 kDa

Purification Method:

Protein A purification

CloneNo.:

242098A7

Applications

Tested Applications:

Cytometric bead array, Sandwich ELISA, Indirect ELISA,
Sample test

Species Specificity:

human

Background Information

Storage

Storage:

Store at -80°C.

The product is shipped with ice packs. Upon receipt, store it immediately at -80°C

Storage Buffer:

PBS Only

For technical support and original validation data for this product please contact:

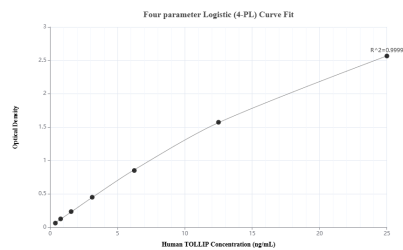
T: 4006900926

E: Proteintech-CN@ptglab.com

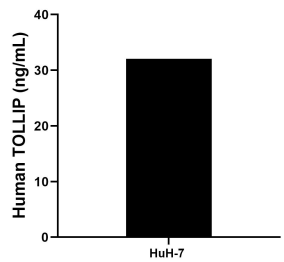
W: ptgcn.com

This product is exclusively available under Proteintech Group brand and is not available to purchase from any other manufacturer.

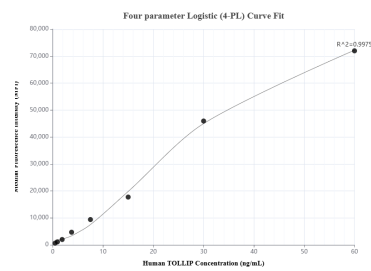
Selected Validation Data



Sandwich ELISA standard curve of MP01524-2, Human TOLLIP Recombinant Matched Antibody Pair - PBS only. 84711-2-PBS was coated to a plate as the capture antibody and incubated with serial dilutions of standard Ag1864. 84711-1-PBS was HRP conjugated as the detection antibody. Range: 0.391-25 ng/mL



The mean TOLLIP concentration was determined to be 32.07 ng/mL in HuH-7 cell extract based on a 1.4 mg/mL extract load.



Cytometric bead array standard curve of MP01524-2, TOLLIP Recombinant Matched Antibody Pair, PBS Only. Capture antibody: 84711-2-PBS. Detection antibody: 84711-1-PBS. Standard: Ag1864. Range: 0.469-60 ng/mL