

For Research Use Only

YTHDF3 Recombinant antibody, PBS Only (Capture)

Catalog Number: 84709-3-PBS



Basic Information

Catalog Number:

84709-3-PBS

Size:

1 mg/ml

Source:

Rabbit

Isotype:

IgG

Immunogen Catalog Number:

AG22407

GenBank Accession Number:

BC052970

GeneID (NCBI):

253943

UNIPROT ID:

Q7Z739

Full Name:

YTH domain family, member 3

Calculated MW:

585 aa, 64 kDa

Observed MW:

64 kDa

Purification Method:

Protein A purification

CloneNo.:

242149F3

Applications

Tested Applications:

WB, Cytometric bead array, Indirect ELISA

Species Specificity:

human, mouse, rat

Background Information

YTHDF3, also named as YTH domain-containing family protein 3, is a 585 amino acid protein, which contains 1 YTH domain. YTHDF3 specifically recognizes and binds N6-methyladenosine (m6A)-containing RNAs. M6A is a modification present at internal sites of mRNAs and some non-coding RNAs and plays a role in the efficiency of mRNA splicing, processing and stability.

Storage

Storage:

Store at -80°C.

The product is shipped with ice packs. Upon receipt, store it immediately at -80°C

Storage Buffer:

PBS Only

For technical support and original validation data for this product please contact:

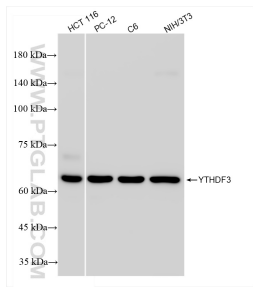
T: 4006900926

E: Proteintech-CN@ptglab.com

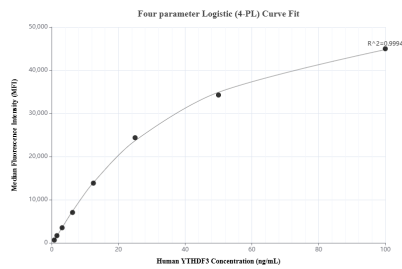
W: ptgcn.com

This product is exclusively available under Proteintech Group brand and is not available to purchase from any other manufacturer.

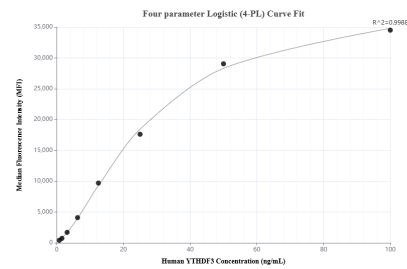
Selected Validation Data



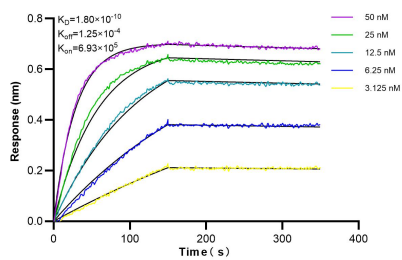
Various lysates were subjected to SDS PAGE followed by western blot with 84709-3-RR (YTHDF3 antibody) at dilution of 1:5000 incubated at room temperature for 1.5 hours. This data was developed using the same antibody clone with 84709-3-PBS in a different storage buffer formulation.



Cytometric bead array standard curve of MP01516-1, YTHDF3 Recombinant Matched Antibody Pair, PBS Only. Capture antibody: 84709-3-PBS. Detection antibody: 84709-1-PBS. Standard: Ag22407. Range: 0.781-100 ng/mL.



Cytometric bead array standard curve of MP01516-2, YTHDF3 Recombinant Matched Antibody Pair, PBS Only. Capture antibody: 84709-3-PBS. Detection antibody: 84709-2-PBS. Standard: Ag22407. Range: 0.781-100 ng/mL.



Biolayer interferometry (BLI) kinetic assays of 84709-3-RR against Human YTHDF3 were performed. The affinity constant is 0.18 nM.