

For Research Use Only

# C12orf29 Recombinant antibody, PBS Only (Capture)

Catalog Number: 84708-1-PBS



## Basic Information

Catalog Number:

84708-1-PBS

Concentration:

1 mg/ml

Source:

Rabbit

Isotype:

IgG

Immunogen Catalog Number:

AG35681

GenBank Accession Number:

NM\_001009894.2

GeneID (NCBI):

91298

UNIPROT ID:

Q8N999

Full Name:

chromosome 12 open reading frame

29

Calculated MW:

37kDa, 325aa

Observed MW:

37 kDa

Purification Method:

Protein A purification

CloneNo.:

242163C3

## Applications

Tested Applications:

WB, Cytometric bead array, Indirect ELISA

Species Specificity:

human, rat

## Background Information

C12orf29, also known as RLIG1, is a 37 kDa human protein consisting of 325 amino acids. It catalyzes ATP-dependent RNA ligation via a three-step mechanism involving tandem auto- and RNA AMPylation (PMID: 36792600).

## Storage

Storage:

Store at -80°C.

The product is shipped with ice packs. Upon receipt, store it immediately at -80°C

Storage Buffer:

PBS Only

For technical support and original validation data for this product please contact:

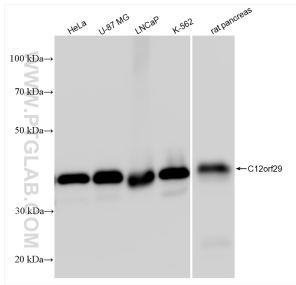
T: 4006900926

E: [Proteintech-CN@ptglab.com](mailto:Proteintech-CN@ptglab.com)

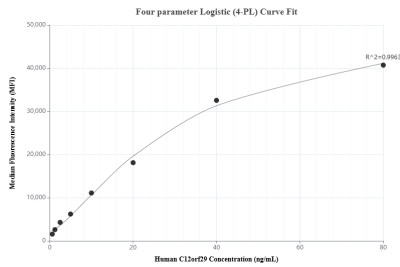
W: [ptgcn.com](http://ptgcn.com)

This product is exclusively available under Proteintech Group brand and is not available to purchase from any other manufacturer.

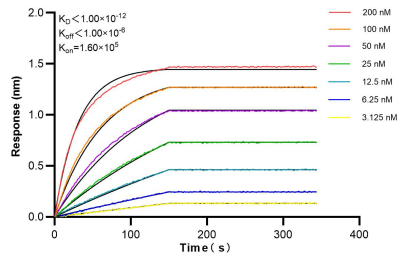
## Selected Validation Data



HeLa cells were subjected to SDS PAGE followed by western blot with 84708-1-RR (C12orf29 antibody) at dilution of 1:10000 incubated at room temperature for 1.5 hours. This data was developed using the same antibody clone with 84708-1-PBS in a different storage buffer formulation.



Cytometric bead array standard curve of MP01512-1, C12orf29 Recombinant Matched Antibody Pair, PBS Only. Capture antibody: 84708-1-PBS. Detection antibody: 84708-2-PBS. Standard: Ag35681. Range: 0.625-80 ng/mL.



Biolayer interferometry (BLI) kinetic assays of 84708-1-RR against Human C12orf29 were performed. The affinity constant is below 1 pM.