

For Research Use Only

# CYP26A1 Recombinant monoclonal antibody

Catalog Number: 84699-1-RR



## Basic Information

Catalog Number: 84699-1-RR	GenBank Accession Number: BC157063	Purification Method: Protein A purification
Source: Rabbit	GeneID (NCBI): 1592	CloneNo.: 241816D11
Isotype: IgG	UNIPROT ID: O43174	Recommended Dilutions: WB: 1:5000-1:50000 IHC: 1:250-1:1000 IF-P: 1:125-1:500 FC (Intra): 0.25 ug per 10 <sup>6</sup> cells in a 100 µl suspension
Immunogen Catalog Number: AG24898	Full Name: cytochrome P450, family 26, subfamily A, polypeptide 1 Calculated MW: 497 aa, 56 kDa Observed MW: 50-56 kDa	

## Applications

Tested Applications: WB, IHC, IF-P, FC (Intra), ELISA	Positive Controls:
Species Specificity: human, mouse	WB : human placenta tissue, mouse skeletal muscle tissue
<b>Note-IHC: suggested antigen retrieval with TE buffer pH 9.0; (*) Alternatively, antigen retrieval may be performed with citrate buffer pH 6.0</b>	IHC : mouse skeletal muscle tissue,
	IF-P : human placenta tissue,
	FC (Intra) : HepG2 cells,

## Background Information

CYP26A1 (Cytochrome P450 Family 26 Subfamily A Member 1), also known as Cytochrome P450 26A1, CP26, CYP26, P450RA1, and P450RA11, is a member of the cytochrome P450 superfamily of enzymes, involved in retinoic acid (RA) metabolism and synthesis of cholesterol, steroids, and other lipids. CYP26A1 is essential for normal hindbrain patterning, vertebral identity, and development of posterior structures(PMID: 11157778).

## Storage

Storage:  
Store at -20°C. Stable for one year after shipment.  
Storage Buffer:  
PBS with 0.02% sodium azide and 50% glycerol, pH7.3  
Aliquoting is unnecessary for -20°C storage

For technical support and original validation data for this product please contact:

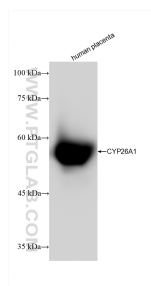
T: 4006900926

E: [Proteintech-CN@ptglab.com](mailto:Proteintech-CN@ptglab.com)

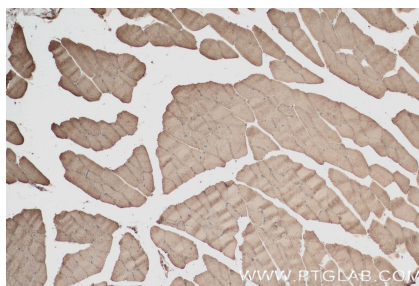
W: [ptgcn.com](http://ptgcn.com)

This product is exclusively available under Proteintech Group brand and is not available to purchase from any other manufacturer.

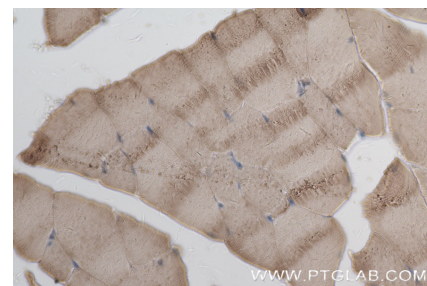
## Selected Validation Data



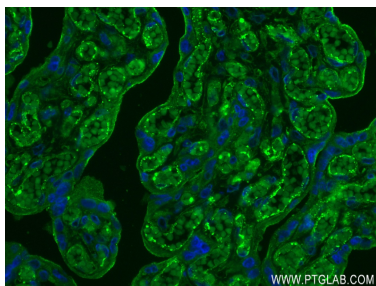
Various lysates were subjected to SDS PAGE followed by western blot with 84699-1-RR (CYP26A1 antibody) at dilution of 1:10000 incubated at room temperature for 1.5 hours.



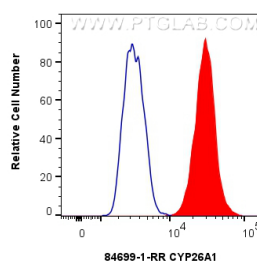
Immunohistochemical analysis of paraffin-embedded mouse skeletal muscle tissue slide using 84699-1-RR (CYP26A1 antibody) at dilution of 1:500 (under 10x lens). Heat mediated antigen retrieval with Tris-EDTA buffer (pH 9.0).



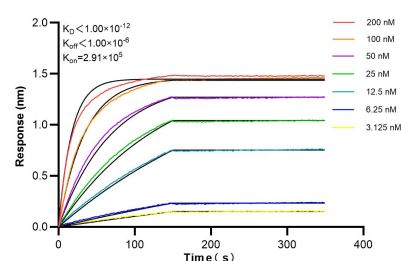
Immunohistochemical analysis of paraffin-embedded mouse skeletal muscle tissue slide using 84699-1-RR (CYP26A1 antibody) at dilution of 1:500 (under 40x lens). Heat mediated antigen retrieval with Tris-EDTA buffer (pH 9.0).



Immunofluorescent analysis of (4% PFA) fixed paraffin-embedded human placenta tissue using CYP26A1 antibody (84699-1-RR, Clone: 241816D11) at dilution of 1:250 and CoraLite®488-Conjugated Goat Anti-Rabbit IgG(H+L) (SA00013-2). Heat mediated antigen retrieval with Tris-EDTA buffer (pH 9.0).



$1 \times 10^6$  HepG2 cells were intracellularly stained with 0.25  $\mu$ g CYP26A1 Recombinant antibody (84699-1-RR, Clone:241816D11) and CoraLite®488-Conjugated Goat Anti-Rabbit IgG(H+L) (SA00013-2) (red), or 0.25  $\mu$ g Rabbit IgG Isotype Control RecAb (98136-1-RR, Clone: 240953C9) (blue). Cells were fixed with 4% PFA and permeabilized with Flow Cytometry Perm Buffer.



Bilayer interferometry (BLI) kinetic assays of 84699-1-RR against Human CYP26A1 were performed. The affinity constant is below 1 pM.