

For Research Use Only

# MAT2A Recombinant antibody

Catalog Number: 84698-1-RR



## Basic Information

Catalog Number:

84698-1-RR

Size:

1000  $\mu$ g/ml

Source:

Rabbit

Isotype:

IgG

GenBank Accession Number:

NM\_005911

GeneID (NCBI):

4144

UNIPROT ID:

P31153

Full Name:

methionine adenosyltransferase II,  
alpha

Calculated MW:

44 kDa

Observed MW:

45-50 kDa

Purification Method:

Protein A purification

CloneNo.:

241930C7

Recommended Dilutions:

WB 1:2000-1:10000

## Applications

Tested Applications:

WB, ELISA

Species Specificity:

human, mouse

Positive Controls:

WB : HeLa cells, HEK-293 cells, Jurkat cells, SGC-7901 cells, NIH/3T3 cells

## Background Information

MAT2A, also named as AMS2, MATA2 and AdoMet synthase 2, belongs to the AdoMet synthase family. It catalyzes the formation of S-adenosylmethionine from methionine and ATP. This antibody is specific to MATA2.

## Storage

Storage:

Store at -20°C. Stable for one year after shipment.

Storage Buffer:

PBS with 0.02% sodium azide and 50% glycerol pH 7.3.

Aliquoting is unnecessary for -20°C storage

For technical support and original validation data for this product please contact:

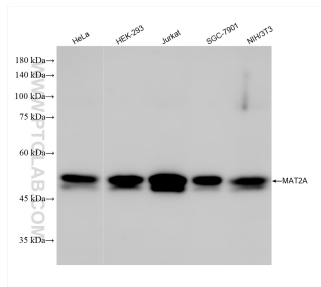
T: 4006900926

E: [Proteintech-CN@ptglab.com](mailto:Proteintech-CN@ptglab.com)

W: [ptgcn.com](http://ptgcn.com)

This product is exclusively available under Proteintech Group brand and is not available to purchase from any other manufacturer.

## Selected Validation Data



Various lysates were subjected to SDS PAGE followed by western blot with 84698-1-RR (MAT2A antibody) at dilution of 1:5000 incubated at room temperature for 1.5 hours.