

For Research Use Only

Phospho-MEK1 (Ser298) Recombinant antibody, PBS Only

Catalog Number: 84691-1-PBS



Basic Information

Catalog Number:	84691-1-PBS	GenBank Accession Number:	BC139729	Purification Method:	Protein A purification
Size:	1 mg/ml	GeneID (NCBI):	5604	CloneNo.:	241719G5
Source:	Rabbit	ENSEMBL Gene ID:	ENSG00000169032		
Isotype:	IgG	UNIPROT ID:	Q02750		
		Full Name:	mitogen-activated protein kinase kinase 1		
		Calculated MW:	43 kDa		
		Observed MW:	40-45 kDa		

Applications

Tested Applications:
WB, FC (Intra), Indirect ELISA

Species Specificity:
human

Background Information

MAP2K1 encodes MAPK1, also known as MEK1. MEK1 variants can enhance MEK1 expression and ERK1 phosphorylation that together lead to continuous activation of MEK/ERK signaling pathway. MEK1 bind directly to ERK2 through a region in the N terminus of MEK. In addition, a proline-rich (PR) regulatory sequence in MEK is also involved in MEK-ERK association and signal propagation. The coupling between MEK1 and ERK2 is enhanced through phosphorylation on S298 in the MEK1 PR region, whereas phosphorylation on MEK1 T292 releases the complex. MEK1 enzymatic activity is regulated by site-specific phosphorylation that can be activated with phosphorylation of Ser217/Ser221 by Raf kinase or suppressed by phosphorylation of Thr286 and Thr292 by CDK1 and CDK5 or Thr292 and Thr386 by ERK1/2. (PMID: 31972311, PMID: 17928366, PMID: 22177953)

Storage

Storage:
Store at -80°C.
The product is shipped with ice packs. Upon receipt, store it immediately at -80°C

Storage Buffer:
PBS Only

For technical support and original validation data for this product please contact:

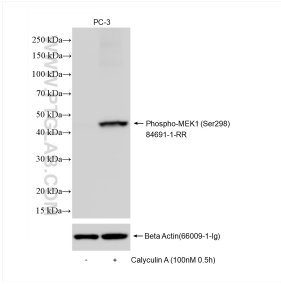
T: 4006900926

E: Proteintech-CN@ptglab.com

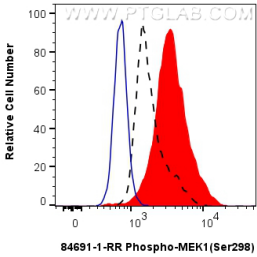
W: ptgcn.com

This product is exclusively available under Proteintech Group brand and is not available to purchase from any other manufacturer.

Selected Validation Data



Non-treated and Calyculin A treated PC-3 cells were subjected to SDS PAGE followed by western blot with 84691-1-RR (Phospho-MEK1 (Ser298)) at dilution of 1:10000 incubated at room temperature for 1.5 hours. The membrane was stripped and re-blotted with Beta Actin (66009-1-Ig) antibody as a loading control. This data was developed using the same antibody clone with 84691-1-PBS in a different storage buffer formulation.



1X10⁶ HEK-293 cells untreated (dashed lines) or treated with Calyculin A which intracellularly stained with 0.13 ug Phospho-MEK1 (Ser298) Recombinant antibody (84691-1-RR, Clone:241719G5) and CoraLite®488-Conjugated Goat Anti-Rabbit IgG(H+L) (SA00013-2)(red), or 0.13 ug Rabbit IgG Isotype Control RecAb (98136-1-RR, Clone: 240953C9) (blue). Cells were fixed with 4% PFA and permeabilized with 90% MeOH. This data was developed using the same antibody