

For Research Use Only

VEGFA Recombinant antibody, PBS Only (Detector)

Catalog Number: 84687-2-PBS



Basic Information

Catalog Number:	84687-2-PBS	GenBank Accession Number:	NM_001171628.1	Purification Method:	Protein A purification
Size:	1 mg/ml	GeneID (NCBI):	7422	CloneNo.:	242072G9
Source:	Rabbit	UNIPROT ID:	P15692-9		
Isotype:	IgG	Full Name:	vascular endothelial growth factor A		

Applications

Tested Applications:
WB, Cytometric bead array, Indirect ELISA

Species Specificity:
human

Background Information

VEGFA, also named VEGF or VPF, belongs to the PDGF/VEGF growth factor family. It is a growth factor active in angiogenesis, vasculogenesis and endothelial cell growth. VEGFA induces endothelial cell proliferation, promotes cell migration, inhibits apoptosis and induces permeabilization of blood vessels. It binds to the FLT1/VEGFR1 and KDR/VEGFR2 receptors, heparan sulfate and heparin. Defects in VEGFA are associated with microvascular complications of diabetes type 1 (MVCD1). VEGFA has 17 isoforms with MW from 16 to 45 kDa. Some isoforms have homodimer forms (e.g.; VEGFA189 38 kDa or VEGFA110 34 kDa). VEGF-A exists in at least seven homodimeric isoforms. The monomers consist of 121, 145, 148, 165, 183, 189, or 206 amino acids (PMID:15602010).

Storage

Storage:
Store at -80°C.
The product is shipped with ice packs. Upon receipt, store it immediately at -80°C

Storage Buffer:
PBS Only

For technical support and original validation data for this product please contact:

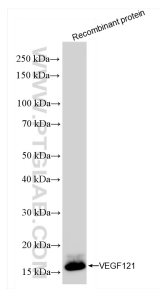
T: 4006900926

E: Proteintech-CN@ptglab.com

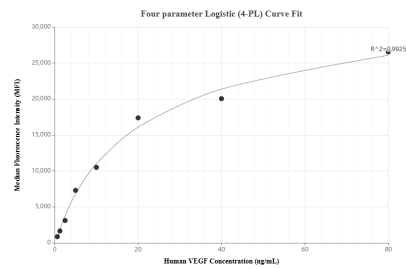
W: ptgcn.com

This product is exclusively available under Proteintech Group brand and is not available to purchase from any other manufacturer.

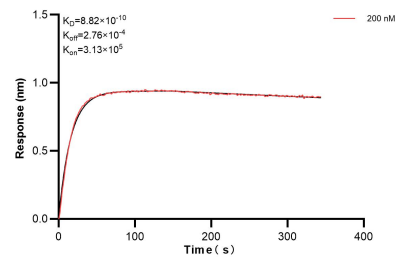
Selected Validation Data



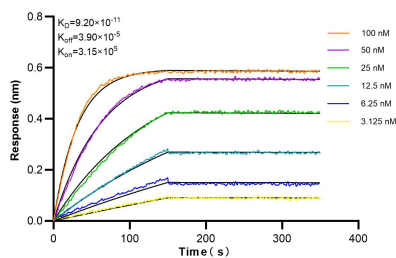
Recombinant protein VEGF121 (Eg1263) was subjected to SDS PAGE followed by western blot with 84687-2-RR (VEGFA antibody) at dilution of 1:5000 incubated at room temperature for 1.5 hours. This data was developed using the same antibody clone with 84687-2-PBS in a different storage buffer formulation.



Cytometric bead array standard curve of MP01495-1, VEGF Recombinant Matched Antibody Pair, PBS Only. Capture antibody: 84687-1-PBS. Detection antibody: 84687-2-PBS. Standard: Eg1263. Range: 0.625-80 ng/mL.



Biolayer interferometry (BLI) kinetic assay of 84687-2-PBS against Human VEGF121 was performed. The affinity constant is 0.882 nM.



Biolayer interferometry (BLI) kinetic assays of 84687-2-RR against Human VEGFA were performed. The affinity constant is 92.0 pM.