

For Research Use Only

AEG-1/MTDH Recombinant antibody, PBS Only

Catalog Number: 84686-4-PBS



Basic Information

| | | |
|-------------------------------------|---------------------------------------|--|
| Catalog Number: 84686-4-PBS | GenBank Accession Number: BC045642 | Purification Method: Protein A purification |
| Concentration: 1 mg/ml | GeneID (NCBI): 92140 | CloneNo.: 242110B5 |
| Source: Rabbit | UNIPROT ID: Q86UE4 | |
| Isotype: IgG | Full Name: metadherin | |
| Immunogen Catalog Number: AG4840 | Calculated MW: 582 aa, 64 kDa | |
| | Observed MW: 75 kDa | |

Applications

Tested Applications:
WB, IF/ICC, FC (Intra), Indirect ELISA

Species Specificity:
human

Background Information

MTDH, also known as AEG-1, is a single-pass transmembrane protein with its gene located at chromosome 8q22, the abnormalities of which have been identified in several tumor types. MTDH is overexpressed in a number of malignancies, such as breast cancer, malignant glioma, and neuroblastoma, and its overexpression is associated with poor clinical outcome. MTDH plays an important role in the regulation of carcinogenesis and tumor progression.

Storage

Storage:
Store at -80°C.
The product is shipped with ice packs. Upon receipt, store it immediately at -80°C

Storage Buffer:
PBS only, pH7.3

For technical support and original validation data for this product please contact:

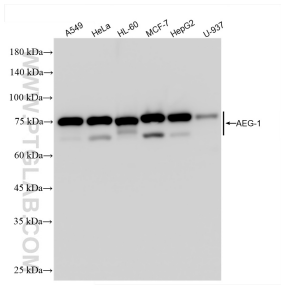
T: 4006900926

E: Proteintech-CN@ptglab.com

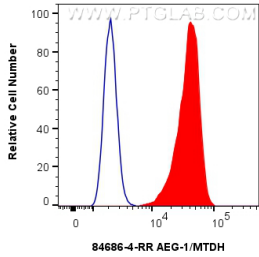
W: ptgcn.com

This product is exclusively available under Proteintech Group brand and is not available to purchase from any other manufacturer.

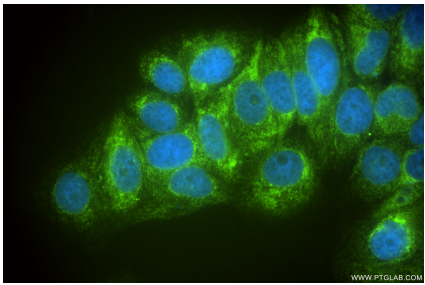
Selected Validation Data



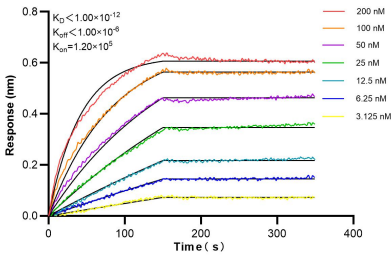
Various lysates were subjected to SDS PAGE followed by western blot with 84686-4-RR (AEG-1 antibody) at dilution of 1:10000 incubated at room temperature for 1.5 hours. This data was developed using the same antibody clone with 84686-4-PBS in a different storage buffer formulation.



1x10⁶ A549 cells were intracellularly stained with 0.25 ug AEG-1/MTDH Recombinant antibody (84686-4-RR, Clone:242110B5) and CoraLite®488-Conjugated Goat Anti-Rabbit IgG(H+L) (SA00013-2)(red), or 0.25 ug Rabbit IgG Isotype Control RecAb (98136-1-RR, Clone: 240953C9) (blue). Cells were fixed with 4% PFA and permeabilized with Flow Cytometry Perm Buffer (PF00011-C). This data was developed using the same antibody clone



Immunofluorescent analysis of (4% PFA) fixed MCF-7 cells using AEG-1 antibody (84686-4-RR, Clone: 242110B5) at dilution of 1:400 and CoraLite®488-Conjugated Goat Anti-Rabbit IgG(H+L) (SA00013-2). This data was developed using the same antibody clone with 84686-4-PBS in a different storage buffer formulation.



Biolayer interferometry (BLI) kinetic assays of 84686-4-RR against Human AEG-1/MTDH were performed. The affinity constant is below 1 pM.