

For Research Use Only

AEg-1 Recombinant antibody, PBS Only (Detector)

Catalog Number: 84686-2-PBS



Basic Information

Catalog Number:

84686-2-PBS

Concentration:

1 mg/ml

Source:

Rabbit

Isotype:

IgG

Immunogen Catalog Number:

AG4840

GenBank Accession Number:

BC045642

GeneID (NCBI):

92140

UNIPROT ID:

Q86UE4

Full Name:

metadherin

Calculated MW:

582 aa, 64 kDa

Purification Method:

Protein A purification

CloneNo.:

242110E1

Applications

Tested Applications:

Cytometric bead array, Sandwich ELISA, Indirect ELISA, Sample test

Species Specificity:

human

Background Information

Storage

Storage:

Store at -80°C.

The product is shipped with ice packs. Upon receipt, store it immediately at -80°C

Storage Buffer:

PBS only, pH7.3

For technical support and original validation data for this product please contact:

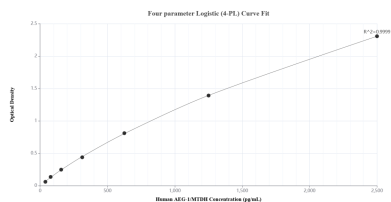
T: 4006900926

E: Proteintech-CN@ptglab.com

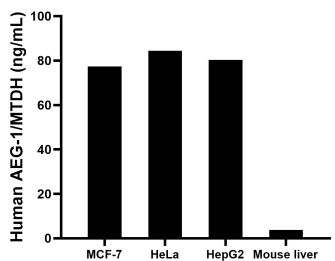
W: ptgcn.com

This product is exclusively available under Proteintech Group brand and is not available to purchase from any other manufacturer.

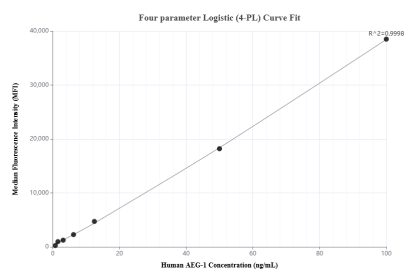
Selected Validation Data



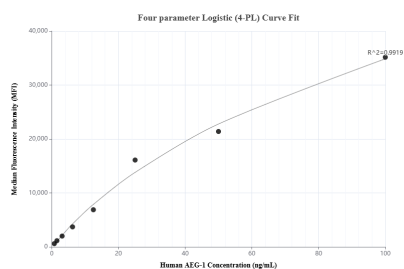
Sandwich ELISA standard curve of MP01497-1, Human AEG-1/MTDH Recombinant Matched Antibody Pair - PBS only. 84686-1-PBS was coated to a plate as the capture antibody and incubated with serial dilutions of standard Ag4840. 84686-2-PBS was HRP conjugated as the detection antibody. Range: 39.1-2500 pg/mL



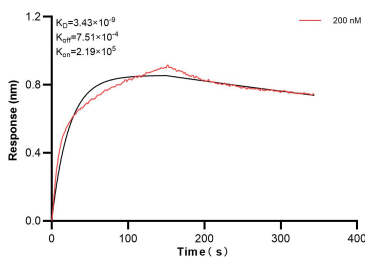
The mean AEG-1/MTDH concentration was determined to be 77.3 ng/mL in MCF-7 cell extract based on a 1.2 mg/mL extract load, 84.5 ng/mL in HeLa cell extract based on a 1.3 mg/mL extract load, 80.3 ng/mL in HepG2 cell extract based on a 3.3 mg/mL extract load and 3.8 ng/mL in mouse liver tissue extract based on a 3.7 mg/mL extract load.



Cytometric bead array standard curve of MP01497-1, AEG-1/MTDH Recombinant Matched Antibody Pair, PBS Only. Capture antibody: 84686-1-PBS. Detection antibody: 84686-2-PBS. Standard: Ag4840. Range: 0.781-100 ng/mL



Cytometric bead array standard curve of MP01497-2, AEG-1/MTDH Recombinant Matched Antibody Pair, PBS Only. Capture antibody: 84686-3-PBS. Detection antibody: 84686-2-PBS. Standard: Ag4840. Range: 0.781-100 ng/mL



Biolayer interferometry (BLI) kinetic assay of 84686-2-PBS against Human AEG-1 was performed. The affinity constant is 3.43 nM.