

For Research Use Only

# Serpin F1/PEDF Recombinant antibody, PBS Only

Catalog Number: 84685-3-PBS



## Basic Information

Catalog Number: 84685-3-PBS	GenBank Accession Number: NM_002615.7	Purification Method: Protein A purification
Concentration: 1 mg/ml	GeneID (NCBI): 5176	CloneNo.: 242127F9
Source: Rabbit	UNIPROT ID: P36955	
Isotype: IgG	Full Name: serpin peptidase inhibitor, clade F (alpha-2 antiplasmin, pigment epithelium derived factor), member 1	
	Calculated MW: 46kDa	
	Observed MW: 46 kDa	

## Applications

Tested Applications:  
WB, FC (Intra), Indirect ELISA

Species Specificity:  
human, mouse

## Background Information

PEDF also known as serpin F1 (SERPINF1), is a multifunctional secreted protein that has anti-angiogenic, anti-tumorigenic, and neurotrophic functions. It is an approximately 50-kDa secreted protein that is widely expressed, including by osteoblasts and osteoclasts. PEDF is also one of the most abundant secretory products of adipocytes, and circulating concentrations of PEDF correlate positively with body fat mass and INS resistance. PEDF is a neurotrophic factor involved in neuronal differentiation in retinoblastoma cells. Mutations in this gene were found in individuals with osteogenesis imperfecta, type VI.

## Storage

Storage:  
Store at -80°C.  
The product is shipped with ice packs. Upon receipt, store it immediately at -80°C

Storage Buffer:  
PBS only

For technical support and original validation data for this product please contact:

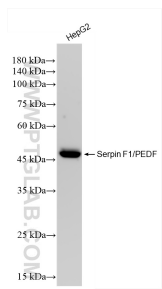
T: 4006900926

E: Proteintech-CN@ptglab.com

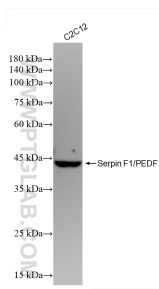
W: ptgcn.com

This product is exclusively available under Proteintech Group brand and is not available to purchase from any other manufacturer.

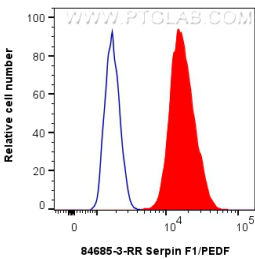
Selected Validation Data



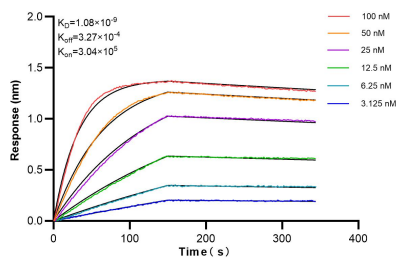
HepG2 cells were subjected to SDS PAGE followed by western blot with 84685-3-RR (Serpin F1/PEDF antibody) at dilution of 1:10000 incubated at room temperature for 1.5 hours. This data was developed using the same antibody clone with 84685-3-PBS in a different storage buffer formulation.



C2C12 cells were subjected to SDS PAGE followed by western blot with 84685-3-RR (Serpin F1/PEDF antibody) at dilution of 1:10000 incubated at room temperature for 1.5 hours. This data was developed using the same antibody clone with 84685-3-PBS in a different storage buffer formulation.



1x10<sup>6</sup> HEK-293 cells were intracellularly stained with 0.25 ug Serpin F1/PEDF Recombinant antibody (84685-3-RR, Clone:242127F9) and CoraLite®488-Conjugated Goat Anti-Rabbit IgG(H+L) (SA00013-2)(red), or 0.25 ug Rabbit IgG Isotype Control RecAb (98136-1-RR, Clone: 240953C9) (blue). Cells were fixed with 4% PFA and permeabilized with Flow Cytometry Perm Buffer (PF00011-C). This data was developed using the same antibody clone



Biolayer interferometry (BLI) kinetic assays of 84685-3-RR against Human Serpin F1/PEDF were performed. The affinity constant is 1.08 nM.