

For Research Use Only

Serpin F1/PEDF Recombinant antibody, PBS Only (Capture)

Catalog Number: 84685-2-PBS



Basic Information

Catalog Number:

84685-2-PBS

Size:

1 mg/ml

Source:

Rabbit

Isotype:

IgG

GenBank Accession Number:

NM_002615.7

GeneID (NCBI):

5176

UNIPROT ID:

P36955

Full Name:

serpin peptidase inhibitor, clade F
(alpha-2 antiplasmin, pigment
epithelium derived factor), member 1

Calculated MW:

46kDa

Purification Method:

Protein A purification

CloneNo.:

242127C9

Applications

Tested Applications:

Cytometric bead array, Sandwich ELISA, Indirect ELISA,
Sample test

Species Specificity:

human

Background Information

Storage

Storage:

Store at -80°C.

The product is shipped with ice packs. Upon receipt, store it immediately at -80°C

Storage Buffer:

PBS Only

For technical support and original validation data for this product please contact:

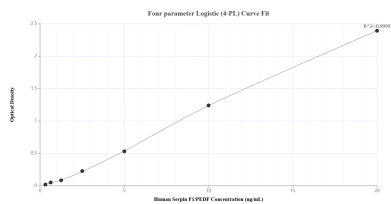
T: 4006900926

E: Proteintech-CN@ptglab.com

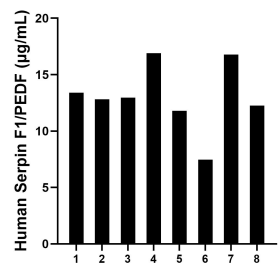
W: ptgcn.com

This product is exclusively available under Proteintech Group brand and is not available to purchase from any other manufacturer.

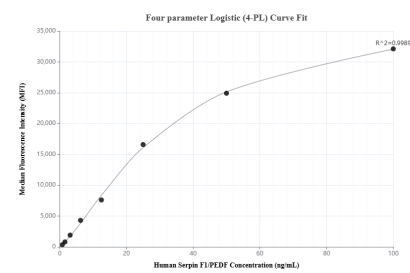
Selected Validation Data



Sandwich ELISA standard curve of MP01496-1, Human Serpin F1/PEDF Recombinant Matched Antibody Pair - PBS only. 84685-2-PBS was coated to a plate as the capture antibody and incubated with serial dilutions of standard Eg1152. 84685-1-PBS was HRP conjugated as the detection antibody. Range: 0.313-20 ng/mL



Serum of eight individual healthy human donors was measured. The Serpin F1/PEDF concentration of detected samples was determined to be 13.04 µg/mL with a range of 7.46-16.90 µg/mL



Cytometric bead array standard curve of MP01496-1, Serpin F1/PEDF Recombinant Matched Antibody Pair, PBS Only. Capture antibody: 84685-2-PBS. Detection antibody: 84685-1-PBS. Standard: Eg1152. Range: 0.781-100 ng/mL