

For Research Use Only

# Siglec-9 Recombinant antibody, PBS Only (Capture/Detector)

Catalog Number: 84683-1-PBS



## Basic Information

Catalog Number:

84683-1-PBS

Size:

1 mg/ml

Source:

Rabbit

Isotype:

IgG

GenBank Accession Number:

NM\_014441.3

GeneID (NCBI):

27180

UNIPROT ID:

Q9Y336-1

Full Name:

sialic acid binding Ig-like lectin 9

Calculated MW:

50 kDa

Purification Method:

Protein A purification

CloneNo.:

241799C8

## Applications

Tested Applications:

Cytometric bead array, Sandwich ELISA, Indirect ELISA,  
Sample test

Species Specificity:

human

## Background Information

### Storage

Storage:

Store at -80°C.

**The product is shipped with ice packs. Upon receipt, store it immediately at -80°C**

Storage Buffer:

PBS Only

For technical support and original validation data for this product please contact:

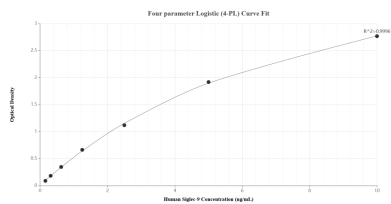
T: 4006900926

E: [Proteintech-CN@ptglab.com](mailto:Proteintech-CN@ptglab.com)

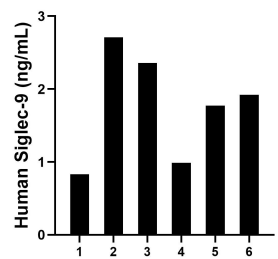
W: [ptgcn.com](http://ptgcn.com)

**This product is exclusively available under Proteintech Group brand and is not available to purchase from any other manufacturer.**

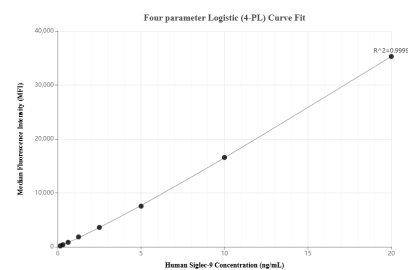
## Selected Validation Data



Sandwich ELISA standard curve of MP01502-3, Human Siglec-9 Recombinant Matched Antibody Pair - PBS only. 84683-1-PBS was coated to a plate as the capture antibody and incubated with serial dilutions of standard Eg1084. 84683-5-PBS was HRP conjugated as the detection antibody. Range: 0.156-10 ng/mL



Serum of six individual healthy human donors was measured. The Siglec-9 concentration of detected samples was determined to be 1.76 ng/mL with a range of 0.83-2.71 ng/mL.



Cytometric bead array standard curve of MP01502-2, Siglec-9 Recombinant Matched Antibody Pair, PBS Only. Capture antibody: 84683-3-PBS. Detection antibody: 84683-1-PBS. Standard: Eg1084. Range: 0.156-20 ng/mL