

For Research Use Only

CDC40 Recombinant antibody, PBS Only

Catalog Number: 84679-4-PBS



Basic Information

Catalog Number:

84679-4-PBS

Concentration:

1 mg/ml

Source:

Rabbit

Isotype:

IgG

Immunogen Catalog Number:

AG36151

GenBank Accession Number:

BC126114

GeneID (NCBI):

51362

UNIPROT ID:

O60508

Full Name:

cell division cycle 40 homolog (S. cerevisiae)

Observed MW:

65-67 kDa

Purification Method:

Protein A purification

CloneNo.:

242034D1

Applications

Tested Applications:

WB, IF/ICC, Indirect ELISA

Species Specificity:

human

Background Information

CDC40 (cell division cycle 40), also known as EHB3. It is expected to be located in the nucleus, which is ubiquitinated in bone marrow and lymph node. The protein is required for pre-mRNA splicing as component of the activated spliceosome, and it plays an important role in embryonic brain development; this function does not require proline isomerization (PMID: 33220177; 33220177). The molecular weight of CDC40 is 65 kDa.

Storage

Storage:

Store at -80°C.

The product is shipped with ice packs. Upon receipt, store it immediately at -80°C

Storage Buffer:

PBS only, pH7.3

For technical support and original validation data for this product please contact:

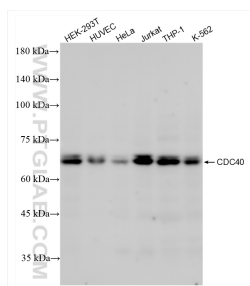
T: 4006900926

E: Proteintech-CN@ptglab.com

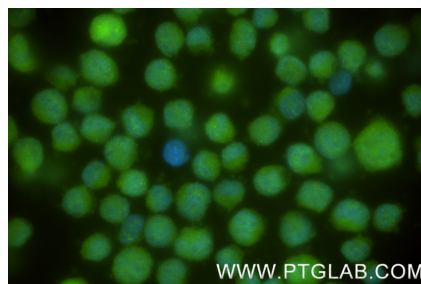
W: ptgcn.com

This product is exclusively available under Proteintech Group brand and is not available to purchase from any other manufacturer.

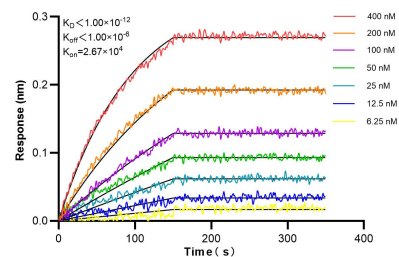
Selected Validation Data



Various lysates were subjected to SDS PAGE followed by western blot with 84679-4-RR (CDC40 antibody) at dilution of 1:10000 incubated at room temperature for 1.5 hours. This data was developed using the same antibody clone with 84679-4-PBS in a different storage buffer formulation.



Immunofluorescent analysis of (4% PFA) fixed K-562 cells using CDC40 antibody (84679-4-RR, Clone: 242034D1) at dilution of 1:200 and CoraLite® 488-Conjugated Goat Anti-Rabbit IgG(H+L) (SA00013-2). This data was developed using the same antibody clone with 84679-4-PBS in a different storage buffer formulation.



Biolayer interferometry (BLI) kinetic assays of 84679-4-RR against Human CDC40 were performed. The affinity constant is below 1 pM.