

For Research Use Only

CST5 Recombinant antibody, PBS Only (Detector)

Catalog Number: 84678-2-PBS



Basic Information

Catalog Number:

84678-2-PBS

Size:

1 mg/ml

Source:

Rabbit

Isotype:

IgG

Immunogen Catalog Number:

AG34412

GenBank Accession Number:

BC069514

GeneID (NCBI):

1473

UNIPROT ID:

P28325

Full Name:

cystatin D

Purification Method:

Protein A purification

CloneNo.:

241564E7

Applications

Tested Applications:

Cytometric bead array, Sandwich ELISA, Indirect ELISA, Sample test

Species Specificity:

human

Background Information

Storage

Storage:

Store at -80°C.

The product is shipped with ice packs. Upon receipt, store it immediately at -80°C

Storage Buffer:

PBS Only

For technical support and original validation data for this product please contact:

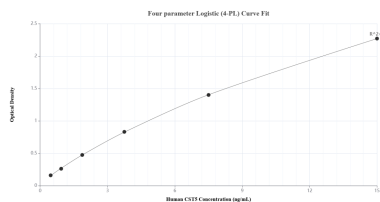
T: 4006900926

E: Proteintech-CN@ptglab.com

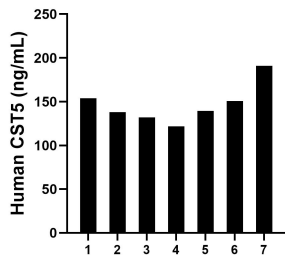
W: ptgcn.com

This product is exclusively available under Proteintech Group brand and is not available to purchase from any other manufacturer.

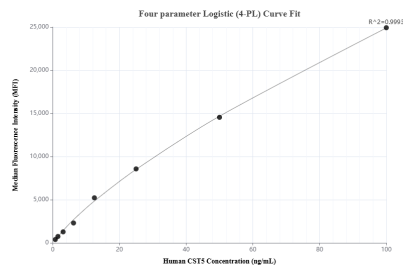
Selected Validation Data



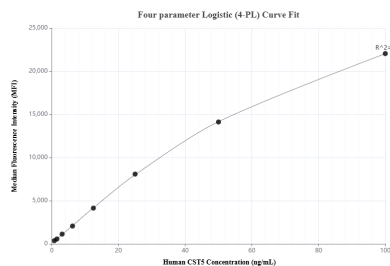
Sandwich ELISA standard curve of MP01490-1, Human CST5 Recombinant Matched Antibody Pair - PBS only. 84678-3-PBS was coated to a plate as the capture antibody and incubated with serial dilutions of standard Ag34412. 84678-2-PBS was HRP conjugated as the detection antibody. Range: 0.469-15 ng/mL.



Saliva of seven individual healthy human donors was measured. The CST5 concentration of detected samples was determined to be 146.65 ng/mL with a range of 121.75-191.04 ng/mL.



Cytometric bead array standard curve of MP01490-1, CST5 Recombinant Matched Antibody Pair, PBS Only. Capture antibody: 84678-3-PBS. Detection antibody: 84678-2-PBS. Standard: Ag34412. Range: 0.781-100 ng/mL.



Cytometric bead array standard curve of MP01490-2, CST5 Recombinant Matched Antibody Pair, PBS Only. Capture antibody: 84678-1-PBS. Detection antibody: 84678-2-PBS. Standard: Ag34412. Range: 0.781-100 ng/mL.