

For Research Use Only

# LAIR1 Recombinant antibody, PBS Only (Capture/Detector)

Catalog Number: 84677-3-PBS



## Basic Information

Catalog Number:

84677-3-PBS

Size:

1 mg/ml

Source:

Rabbit

Isotype:

IgG

GenBank Accession Number:

BC027899

GeneID (NCBI):

3903

UNIPROT ID:

Q6GTX8

Full Name:

leukocyte-associated  
immunoglobulin-like receptor 1

Calculated MW:

287 aa, 31 kDa

Purification Method:

Protein A purification

CloneNo.:

241805F10

## Applications

Tested Applications:

Cytometric bead array, Sandwich ELISA, Indirect ELISA,  
Sample test

Species Specificity:

human

## Background Information

### Storage

Storage:

Store at -80°C.

The product is shipped with ice packs. Upon receipt, store it immediately at -80°C

Storage Buffer:

PBS Only

For technical support and original validation data for this product please contact:

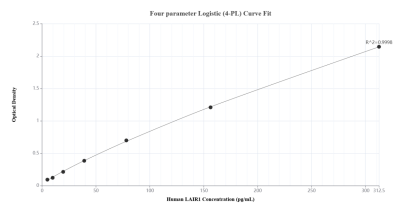
T: 4006900926

E: [Proteintech-CN@ptglab.com](mailto:Proteintech-CN@ptglab.com)

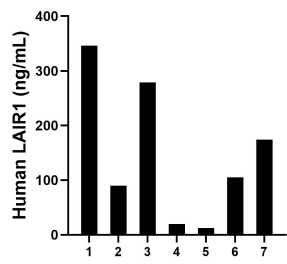
W: [ptgcn.com](http://ptgcn.com)

This product is exclusively available under Proteintech Group brand and is not available to purchase from any other manufacturer.

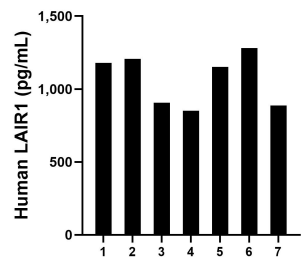
Selected Validation Data



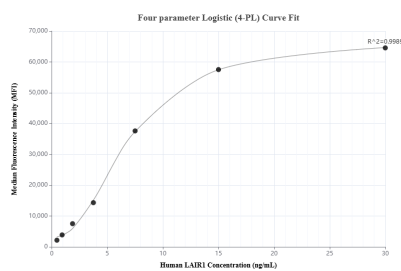
Sandwich ELISA standard curve of MP01466-1, Human LAIR1 Recombinant Matched Antibody Pair - PBS only. 84677-1-PBS was coated to a plate as the capture antibody and incubated with serial dilutions of standard Eg2329. 84677-3-PBS was HRP conjugated as the detection antibody. Range: 4.88-312.5 pg/mL



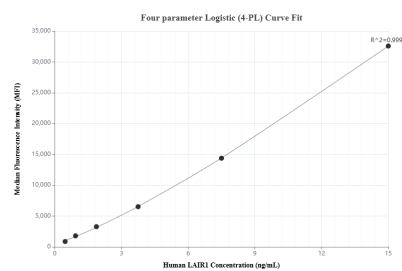
Urine of seven individual healthy human donors was measured. The LAIR1 concentration of detected samples was determined to be 146.7 ng/mL with a range of 12.5-346.3 ng/mL



Serum of seven individual healthy human donors was measured. The LAIR1 concentration of detected samples was determined to be 1,065.9 pg/mL with a range of 851.5-1,280.7 pg/mL



Cytometric bead array standard curve of MP01466-1, LAIR1 Recombinant Matched Antibody Pair, PBS Only. Capture antibody: 84677-1-PBS. Detection antibody: 84677-3-PBS. Standard: Eg2329. Range: 0.469-30 ng/mL



Cytometric bead array standard curve of MP01466-2, LAIR1 Recombinant Matched Antibody Pair, PBS Only. Capture antibody: 84677-3-PBS. Detection antibody: 84677-2-PBS. Standard: Eg2329. Range: 0.469-15 ng/mL