

For Research Use Only

CD300a Recombinant antibody, PBS Only (Capture/Detector)

Catalog Number: 84674-1-PBS



Basic Information

Catalog Number:

84674-1-PBS

Size:

1 mg/ml

Source:

Rabbit

Isotype:

IgG

GenBank Accession Number:

NM_007261.4

GeneID (NCBI):

11314

UNIPROT ID:

Q9UGN4-1

Full Name:

CD300a molecule

Calculated MW:

33 kDa

Purification Method:

Protein A purification

CloneNo.:

242131F4

Applications

Tested Applications:

Cytometric bead array, Sandwich ELISA, Indirect ELISA, Sample test

Species Specificity:

human

Background Information

Storage

Storage:

Store at -80°C.

The product is shipped with ice packs. Upon receipt, store it immediately at -80°C

Storage Buffer:

PBS Only

For technical support and original validation data for this product please contact:

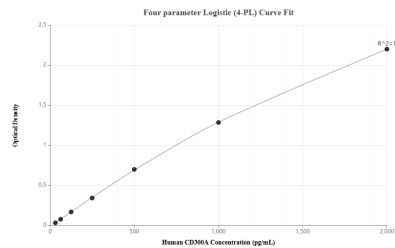
T: 4006900926

E: Proteintech-CN@ptglab.com

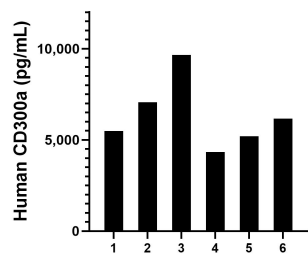
W: ptgcn.com

This product is exclusively available under Proteintech Group brand and is not available to purchase from any other manufacturer.

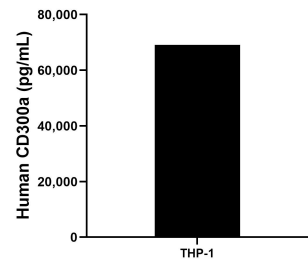
Selected Validation Data



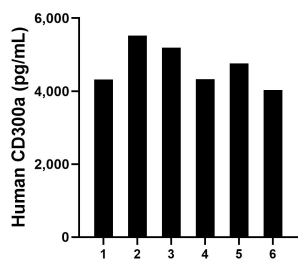
Sandwich ELISA standard curve of MP01465-2, Human CD300a Recombinant Matched Antibody Pair - PBS only. 84674-1-PBS was coated to a plate as the capture antibody and incubated with serial dilutions of standard Eg2652. 84674-3-PBS was HRP conjugated as the detection antibody. Range: 31.25-2000 pg/mL



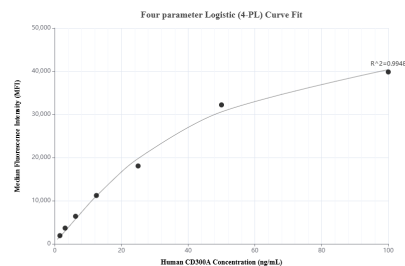
Plasma of six individual healthy human donors was measured. The human CD300a concentration of detected samples was determined to be 6,315.1 pg/mL with a range of 4,330.2 - 9,560.6 pg/mL



The mean CD300a concentration was determined to be 69,064.8 pg/mL in THP-1 cell extract based on a 4.4 mg/mL extract load.



Serum of six individual healthy human donors was measured. The human CD300a concentration of detected samples was determined to be 4,632.3 pg/mL with a range of 4,032.2 - 5,523.5 pg/mL



Cytometric bead array standard curve of MP01465-1, CD300A Recombinant Matched Antibody Pair, PBS Only. Capture antibody: 84674-2-PBS. Detection antibody: 84674-1-PBS. Standard: Eg2652. Range: 0.781-100 ng/mL