

For Research Use Only

Fc epsilon RI alpha Recombinant monoclonal antibody, PBS Only (Capture)

Catalog Number: 84662-6-PBS



Basic Information

Catalog Number:

84662-6-PBS

Source:

Rabbit

Isotype:

IgG

Immunogen Catalog Number:

EG2022

GenBank Accession Number:

NM_001387280.1

GeneID (NCBI):

2205

UNIPROT ID:

P12319

Full Name:

Fc fragment of IgE, high affinity I, receptor for; alpha polypeptide

Calculated MW:

30 kDa

Purification Method:

Protein A purification

CloneNo.:

260244G2

Applications

Tested Applications:

Sandwich ELISA, Indirect ELISA

Species Specificity:

human

Background Information

Storage

Storage:

Store at -80°C.

The product is shipped with ice packs. Upon receipt, store it immediately at -80°C

Storage Buffer:

PBS only, pH7.3

For technical support and original validation data for this product please contact:

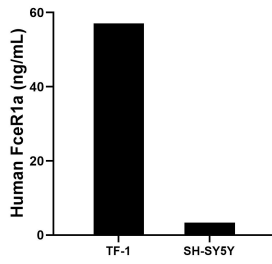
T: 4006900926

E: Proteintech-CN@ptglab.com

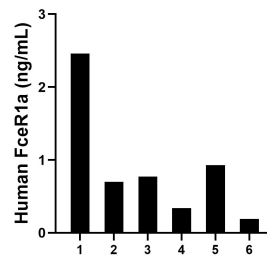
W: ptgcn.com

This product is exclusively available under Proteintech Group brand and is not available to purchase from any other manufacturer.

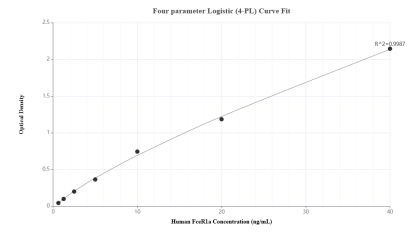
Selected Validation Data



The mean FcεR1a concentration was determined to be 57.10 ng/mL in TF-1 cell extract based on a 4.0 mg/mL extract load and 3.40 ng/mL in SH-SY5Y cell extract based on a 1.2 mg/mL extract load.



Plasma of six individual healthy human donors was measured. The human FcεR1a concentration of detected samples was determined to be 0.90 ng/mL with a range of 0.19 - 2.46 ng/mL.



Sandwich ELISA standard curve of MP01477-2, Human FcεR1a Recombinant Matched Antibody Pair - PBS only. 84662-6-PBS was coated to a plate as the capture antibody and incubated with serial dilutions of standard Eg2022. 84662-5-PBS was HRP conjugated as the detection antibody. Range: 0.625-40 ng/mL