

For Research Use Only

# FcεR1α Recombinant monoclonal antibody

Catalog Number: 84662-4-RR



## Basic Information

Catalog Number:

84662-4-RR

Source:

Rabbit

Isotype:

IgG

Immunogen Catalog Number:

EG2022

GenBank Accession Number:

NM\_001387280.1

GeneID (NCBI):

2205

UNIPROT ID:

P12319

Full Name:

Fc fragment of IgE, high affinity I, receptor for; alpha polypeptide

Calculated MW:

30 kDa

Observed MW:

45-55 kDa

Purification Method:

Protein A purification

CloneNo.:

241848D6

Recommended Dilutions:

WB: 1:500-1:2000

## Applications

Tested Applications:

WB, ELISA

Species Specificity:

human, mouse

Positive Controls:

WB : MC/9 cells, human testis tissue, KU812 cells

## Background Information

Fc epsilon Receptor I alpha (FcεR1α) is a single-pass type I membrane protein that contains 2 immunoglobulin-like domains. FcεR1α forms a tetrameric complex, FcεRI, with one beta and two gamma subunits (PMID: 19406478). FcεRI is the high-affinity receptor for the Fc region of immunoglobulin E (IgE) (PMID: 1532373). It is expressed on mast cells and basophils and plays a central role in the allergic response (PMID: 2148316). The calculated molecular weight of FcεR1α is 30 kDa, the 45- to 55-kDa bands detected by this antibody are probably caused by heterogeneous glycosylation.

## Storage

Storage:

Store at -20°C. Stable for one year after shipment.

Storage Buffer:

PBS with 0.02% sodium azide and 50% glycerol, pH7.3

Aliquoting is unnecessary for -20°C storage

For technical support and original validation data for this product please contact:

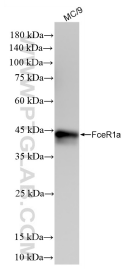
T: 4006900926

E: [Proteintech-CN@ptglab.com](mailto:Proteintech-CN@ptglab.com)

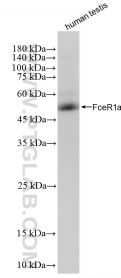
W: [ptgcn.com](http://ptgcn.com)

This product is exclusively available under Proteintech Group brand and is not available to purchase from any other manufacturer.

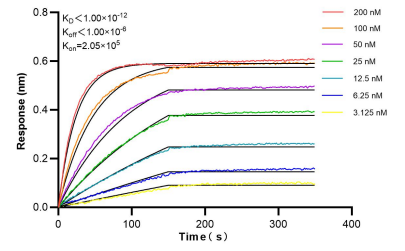
## Selected Validation Data



MC/9 cells were subjected to SDS PAGE followed by western blot with 84662-4-RR (Fc epsilon RI alpha antibody) at dilution of 1:1000 incubated at room temperature for 1.5 hours.



human testis tissue were subjected to SDS PAGE followed by western blot with 84662-4-RR (FceR1a antibody) at dilution of 1:1000 incubated at room temperature for 1.5 hours.



Biolayer interferometry (BLI) kinetic assays of 84662-4-RR against Human FceR1a were performed. The affinity constant is below 1 pM.