

For Research Use Only

FceR1a Recombinant antibody

Catalog Number: 84662-3-RR



Basic Information

Catalog Number:

84662-3-RR

Size:

1000 µg/ml

Source:

Rabbit

Isotype:

IgG

GenBank Accession Number:

NM_001387280.1

GeneID (NCBI):

2205

UNIPROT ID:

P12319

Full Name:

Fc fragment of IgE, high affinity I, receptor for; alpha polypeptide

Calculated MW:

30kDa

Observed MW:

55-65 kDa

Purification Method:

Protein A purification

CloneNo.:

241848D1

Recommended Dilutions:

WB 1:500-1:2000

Applications

Tested Applications:

WB, ELISA

Species Specificity:

human

Positive Controls:

WB : human testis tissue,

Background Information

Fc epsilon Receptor I alpha (FceR1a) is a single-pass type I membrane protein that contains 2 immunoglobulin-like domains. FceR1a forms a tetrameric complex, FceRI, with one beta and two gamma subunits (PMID: 19406478). FceRI is the high-affinity receptor for the Fc region of immunoglobulin E (IgE) (PMID: 1532373). It is expressed on mast cells and basophils and plays a central role in the allergic response (PMID: 2148316). The calculated molecular weight of FceR1a is 30 kDa, the 55- to 70-kDa bands detected by this antibody are probably caused by heterogeneous glycosylation (PMID: 11344350; 12671054).

Storage

Storage:

Store at -20°C. Stable for one year after shipment.

Storage Buffer:

PBS with 0.02% sodium azide and 50% glycerol pH 7.3.

Aliquoting is unnecessary for -20°C storage

For technical support and original validation data for this product please contact:

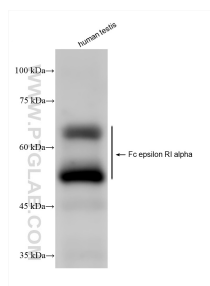
T: 4006900926

E: Proteintech-CN@ptglab.com

W: ptgcn.com

This product is exclusively available under Proteintech Group brand and is not available to purchase from any other manufacturer.

Selected Validation Data



Human testis was subjected to SDS PAGE followed by western blot with 84662-3-RR (Fc epsilon RI alpha antibody) at dilution of 1:1000 incubated at room temperature for 1.5 hours.