

For Research Use Only

LAMP1 Recombinant antibody, PBS Only (Detector)

Catalog Number: 84658-2-PBS



Basic Information

Catalog Number:

84658-2-PBS

Size:

1 mg/ml

Source:

Rabbit

Isotype:

IgG

GenBank Accession Number:

NM_005561.4

GeneID (NCBI):

3916

ENSEMBL Gene ID:

ENSG00000185896

UNIPROT ID:

P11279-1

Full Name:

lysosomal-associated membrane
protein 1

Calculated MW:

45 kDa

Purification Method:

Protein A purification

CloneNo.:

242116A8

Applications

Tested Applications:

Cytometric bead array, Sandwich ELISA, Indirect ELISA,
Sample test

Species Specificity:

human

Background Information

Storage

Storage:

Store at -80°C.

The product is shipped with ice packs. Upon receipt, store it immediately at -80°C

Storage Buffer:

PBS Only

For technical support and original validation data for this product please contact:

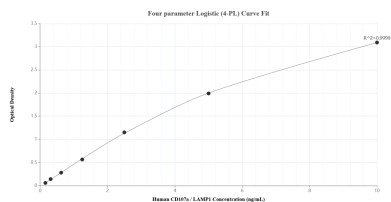
T: 4006900926

E: Proteintech-CN@ptglab.com

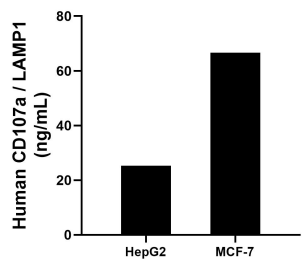
W: ptgcn.com

This product is exclusively available under Proteintech Group brand and is not available to purchase from any other manufacturer.

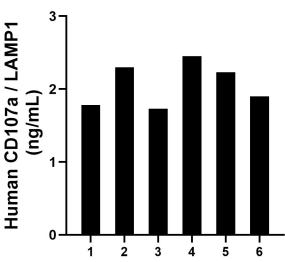
Selected Validation Data



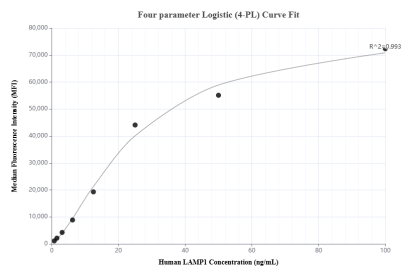
Sandwich ELISA standard curve of MP01489-1, Human CD107a / LAMP1 Recombinant Matched Antibody Pair - PBS only. 84658-1-PBS was coated to a plate as the capture antibody and incubated with serial dilutions of standard Eg2611. 84658-2-PBS was HRP conjugated as the detection antibody. Range: 0.156-10 ng/mL



The mean CD107a / LAMP1 concentration was determined to be 25.30 ng/mL in HepG2 cell extract based on a 1.00 mg/mL extract load and 66.62 ng/mL in MCF-7 cell extract based on a 1.20 mg/mL extract load.



Plasma of six individual healthy human donors was measured. The CD107a / LAMP1 concentration of detected samples was determined to be 2.07 ng/mL with a range of 1.73-2.45 ng/mL



Cytometric bead array standard curve of MP01489-1, CD107a / LAMP1 Recombinant Matched Antibody Pair, PBS Only. Capture antibody: 84658-1-PBS. Detection antibody: 84658-2-PBS. Standard: Eg2611. Range: 0.781-100 ng/mL