

For Research Use Only

LAMP1 Recombinant monoclonal antibody, PBS Only (Capture)

Catalog Number: 84658-1-PBS



Basic Information

Catalog Number:	84658-1-PBS	GenBank Accession Number:	NM_005561.4	Purification Method:	Protein A purification
Source:	Rabbit	GeneID (NCBI):	3916	CloneNo.:	242116A6
Isotype:	IgG	ENSEMBL Gene ID:	ENSG00000185896		
Immunogen Catalog Number:	EG2611	UNIPROT ID:	P11279-1		
		Full Name:	lysosomal-associated membrane protein 1		
		Calculated MW:	45 kDa		

Applications

Tested Applications:
Cytometric bead array, Sandwich ELISA, Indirect ELISA

Species Specificity:
human

Background Information

Storage

Storage:
Store at -80°C.
The product is shipped with ice packs. Upon receipt, store it immediately at -80°C
Storage Buffer:
PBS only, pH7.3

For technical support and original validation data for this product please contact:

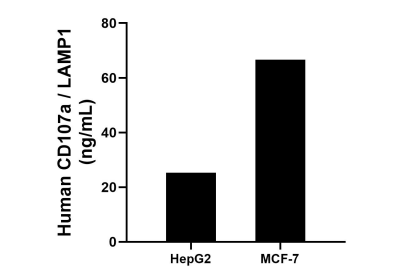
T: 4006900926

E: Proteintech-CN@ptglab.com

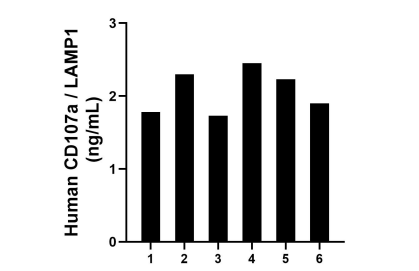
W: ptgcn.com

This product is exclusively available under Proteintech Group brand and is not available to purchase from any other manufacturer.

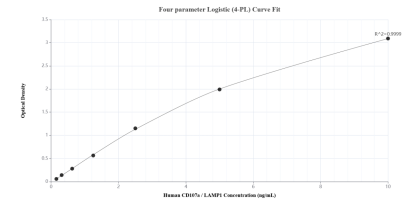
Selected Validation Data



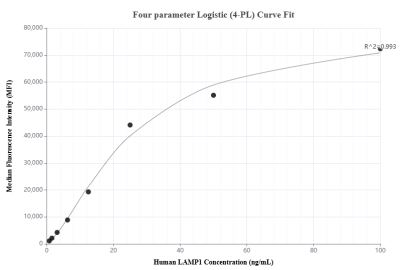
The mean CD107a / LAMP1 concentration was determined to be 25.30 ng/mL in HepG2 cell extract based on a 1.00 mg/mL extract load and 66.62 ng/mL in MCF-7 cell extract based on a 1.20 mg/mL extract load.



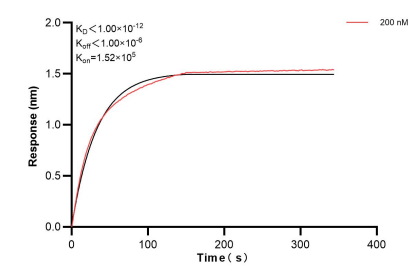
Plasma of six individual healthy human donors was measured. The CD107a / LAMP1 concentration of detected samples was determined to be 2.07 ng/mL with a range of 1.73-2.45 ng/mL.



Sandwich ELISA standard curve of MP01489-1, Human CD107a / LAMP1 Recombinant Matched Antibody Pair - PBS only. 84658-1-PBS was coated to a plate as the capture antibody and incubated with serial dilutions of standard Eg2611. 84658-2-PBS was HRP conjugated as the detection antibody. Range: 0.156-10 ng/mL.



Cytometric bead array standard curve of MP01489-1, CD107a / LAMP1 Recombinant Matched Antibody Pair, PBS Only. Capture antibody: 84658-1-PBS. Detection antibody: 84658-2-PBS. Standard: Eg2611. Range: 0.781-100 ng/mL.



Biolayer interferometry (BLI) kinetic assay of 84658-1-PBS against Human LAMP1 was performed. The affinity constant is below 1 pM.