

For Research Use Only

# CXCR3 Recombinant antibody, PBS Only (Detector)

Catalog Number: 84655-1-PBS



## Basic Information

Catalog Number:

84655-1-PBS

Size:

1 mg/ml

Source:

Rabbit

Isotype:

IgG

GenBank Accession Number:

BC034403

GeneID (NCBI):

2833

UNIPROT ID:

P49682

Full Name:

chemokine (C-X-C motif) receptor 3

Calculated MW:

368 aa, 41 kDa

Purification Method:

Protein A purification

CloneNo.:

241790A8

## Applications

Tested Applications:

Cytometric bead array, Sandwich ELISA, Indirect ELISA,  
Sample test

Species Specificity:

human

## Background Information

### Storage

Storage:

Store at -80°C.

**The product is shipped with ice packs. Upon receipt, store it immediately at -80°C**

Storage Buffer:

PBS Only

For technical support and original validation data for this product please contact:

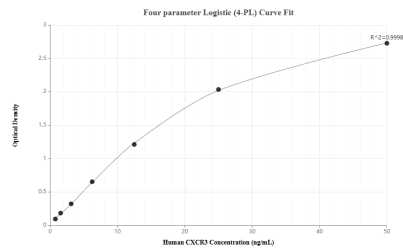
T: 4006900926

E: [Proteintech-CN@ptglab.com](mailto:Proteintech-CN@ptglab.com)

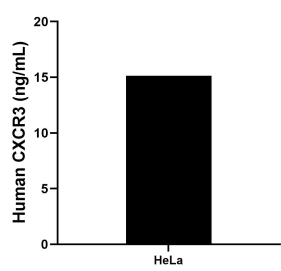
W: [ptgcn.com](http://ptgcn.com)

**This product is exclusively available under Proteintech Group brand and is not available to purchase from any other manufacturer.**

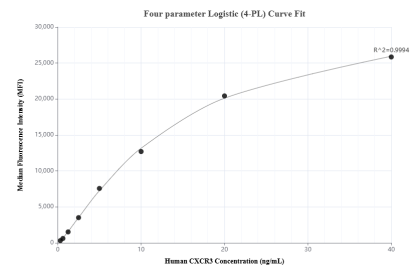
# Selected Validation Data



Sandwich ELISA standard curve of MP01488-2, Human CXCR3 Recombinant Matched Antibody Pair - PBS only. 84655-2-PBS was coated to a plate as the capture antibody and incubated with serial dilutions of standard Eg2269. 84655-1-PBS was HRP conjugated as the detection antibody. Range: 0.781-50 ng/mL



The mean CXCR3 concentration was determined to be 15.15 ng/mL in HeLa cell extract based on a 1.5 mg/mL extract load.



Cytometric bead array standard curve of MP01488-2, CXCR3 Recombinant Matched Antibody Pair, PBS Only. Capture antibody: 84655-2-PBS. Detection antibody: 84655-1-PBS. Standard: Eg2269. Range: 0.313-40 ng/mL