

For Research Use Only

EPCR/CD201 Recombinant antibody, PBS Only (Capture)

Catalog Number: 84648-3-PBS



Basic Information

Catalog Number:

84648-3-PBS

Size:

1 mg/ml

Source:

Rabbit

Isotype:

IgG

GenBank Accession Number:

BC014451

GeneID (NCBI):

10544

UNIPROT ID:

Q9UNN8

Full Name:

protein C receptor, endothelial (EPCR)

Calculated MW:

238 aa, 27 kDa

Purification Method:

Protein A purification

CloneNo.:

241806D12

Applications

Tested Applications:

Cytometric bead array, Sandwich ELISA, Indirect ELISA,
Sample test

Species Specificity:

human

Background Information

Storage

Storage:

Store at -80°C.

The product is shipped with ice packs. Upon receipt, store it immediately at -80°C

Storage Buffer:

PBS Only

For technical support and original validation data for this product please contact:

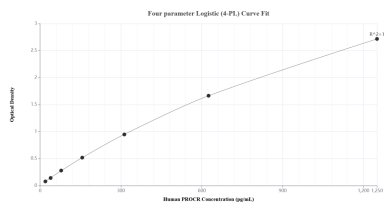
T: 4006900926

E: Proteintech-CN@ptglab.com

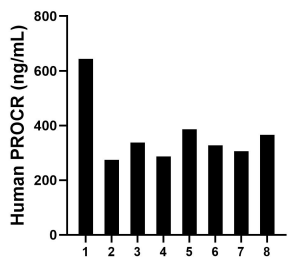
W: ptgcn.com

This product is exclusively available under Proteintech Group brand and is not available to purchase from any other manufacturer.

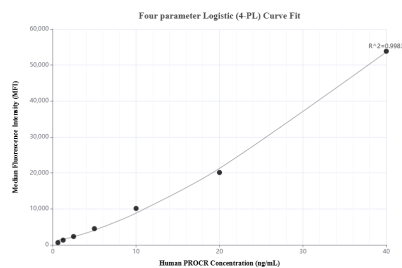
Selected Validation Data



Sandwich ELISA standard curve of MP01480-1, Human PROCr Recombinant Matched Antibody Pair - PBS only. 84648-3-PBS was coated to a plate as the capture antibody and incubated with serial dilutions of standard Eg2339. 84648-1-PBS was HRP conjugated as the detection antibody. Range: 19.5-1250 pg/mL



Plasma of eight individual healthy human donors was measured. The PROCr concentration of detected samples was determined to be 366.0 ng/mL with a range of 274.3-643.4 ng/mL



Cytometric bead array standard curve of MP01480-1, PROCr Recombinant Matched Antibody Pair, PBS Only. Capture antibody: 84648-3-PBS. Detection antibody: 84648-1-PBS. Standard: Eg2339. Range: 0.625-40 ng/mL