

For Research Use Only

Rat E-Cadherin Recombinant antibody, PBS Only (Detector)

Catalog Number: 84646-3-PBS



Basic Information

Catalog Number: 84646-3-PBS	GenBank Accession Number: NM_031334.1	Purification Method: Protein A purification
Concentration: 1 mg/ml	GeneID (NCBI): 83502	CloneNo.: 242018D3
Source: Rabbit	UNIPROT ID: Q9ROT4	
Isotype: IgG	Full Name: cadherin 1	
Immunogen Catalog Number: EG1229	Calculated MW: 99 kDa	
	Observed MW: 125 kDa	

Applications

Tested Applications:
WB, IHC, Cytometric bead array, Sandwich ELISA,
Indirect ELISA, Sample test

Species Specificity:
human, rat

Background Information

Cadherins are a family of transmembrane glycoproteins that mediate calcium-dependent cell-cell adhesion and play an important role in the maintenance of normal tissue architecture. E-cadherin (epithelial cadherin), also known as CDH1 (cadherin 1) or CAM 120/80, is a classical member of the cadherin superfamily which also include N-, P-, R-, and B-cadherins. E-cadherin is expressed on the cell surface in most epithelial tissues. The extracellular region of E-cadherin establishes calcium-dependent homophilic trans binding, providing specific interaction with adjacent cells, while the cytoplasmic domain is connected to the actin cytoskeleton through the interaction with p120-, α -, β -, and γ -catenin (plakoglobin). E-cadherin is important in the maintenance of the epithelial integrity, and is involved in mechanisms regulating proliferation, differentiation, and survival of epithelial cell. E-cadherin may also play a role in tumorigenesis. It is considered to be an invasion suppressor protein and its loss is an indicator of high tumor aggressiveness.

Storage

Storage:
Store at -80°C.
The product is shipped with ice packs. Upon receipt, store it immediately at -80°C

Storage Buffer:
PBS only, pH7.3

For technical support and original validation data for this product please contact:

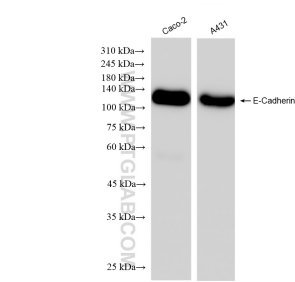
T: 4006900926

E: Proteintech-CN@ptglab.com

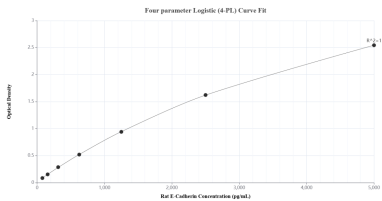
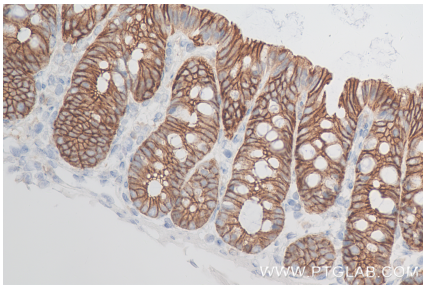
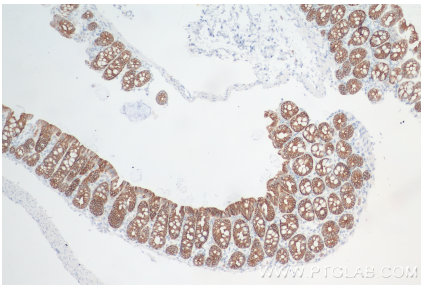
W: ptgcn.com

This product is exclusively available under Proteintech Group brand and is not available to purchase from any other manufacturer.

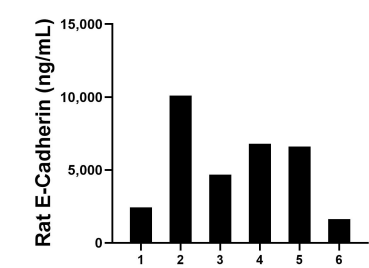
Selected Validation Data



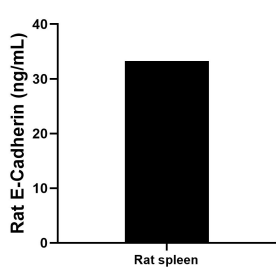
Various lysates were subjected to SDS PAGE followed by western blot with 84646-3-RR (E-Cadherin antibody) at dilution of 1:10000 incubated at room temperature for 1.5 hours. This data was developed using the same antibody clone with 84646-3-PBS in a different storage buffer formulation.



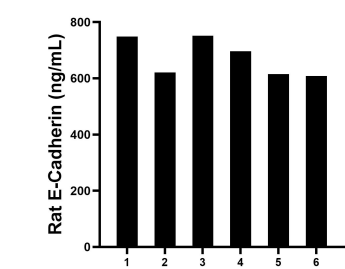
Sandwich ELISA standard curve of MP01483-1, Rat E-Cadherin Recombinant Matched Antibody Pair - PBS only. 84646-1-PBS was coated to a plate as the capture antibody and incubated with serial dilutions of standard Eg1229. 84646-3-PBS was HRP conjugated as the detection antibody. Range: 78.1-5000 pg/mL



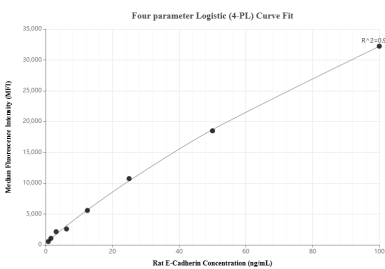
Urine of six rats was measured. The E-Cadherin concentration of detected samples was determined to be 5,367.9 ng/mL with a range of 1,627.0-10,091.3 ng/mL



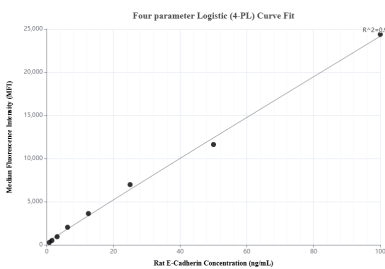
The mean E-Cadherin concentration was determined to be 33.3 ng/mL in rat spleen tissue extract based on a 2.7 mg/mL extract load.



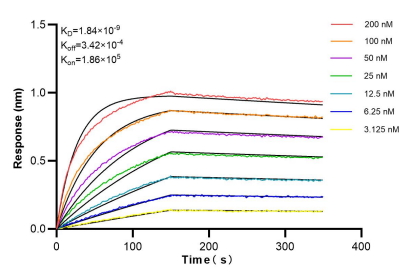
Serum of six rats was measured. The E-Cadherin concentration of detected samples was determined to be 673.3 ng/mL with a range of 608.2-748.3 ng/mL



Cytometric bead array standard curve of MP01483-1, RAT E-Cadherin Recombinant Matched Antibody Pair, PBS Only. Capture antibody: 84646-1-PBS. Detection antibody: 84646-3-PBS. Standard: Eg1229. Range: 0.781-100 ng/mL



Cytometric bead array standard curve of MP01483-2, RAT E-Cadherin Recombinant Matched Antibody Pair, PBS Only. Capture antibody: 84646-2-PBS. Detection antibody: 84646-3-PBS. Standard: Eg1229. Range: 0.781-100 ng/mL



Biolayer interferometry (BLI) kinetic assays of 84646-3-RR against Rat E-Cadherin were performed. The affinity constant is 1.84 nM.