

For Research Use Only

# Prostein Recombinant monoclonal antibody, PBS Only (Detector)

Catalog Number: 84629-2-PBS



## Basic Information

Catalog Number:	84629-2-PBS	GenBank Accession Number:	BC050416	Purification Method:	Protein A purification
Concentration:	1 mg/ml	GeneID (NCBI):	85414	CloneNo.:	242037G8
Source:	Rabbit	UNIPROT ID:	Q96JT2		
Isotype:	IgG	Full Name:	solute carrier family 45, member 3		
Immunogen Catalog Number:	AG5463	Calculated MW:	59 kDa		

## Applications

**Tested Applications:**  
IHC, Cytometric bead array, Indirect ELISA

**Species Specificity:**  
human

## Background Information

Prostein is a prostate tissue-specific protein whose expression is highly restricted to normal and cancerous prostate tissues. Anti-prostein is useful for the identification of prostate adenocarcinomas and is a good marker to identify prostatic origin in metastatic cancer.

## Storage

**Storage:**  
Store at -80°C.  
**The product is shipped with ice packs. Upon receipt, store it immediately at -80°C**

**Storage Buffer:**  
PBS only, pH7.3

For technical support and original validation data for this product please contact:

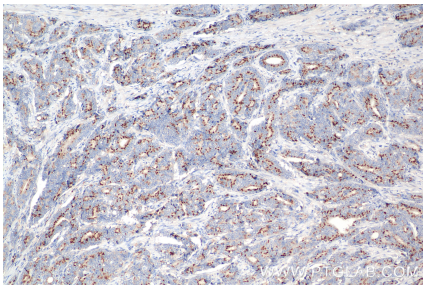
T: 4006900926

E: [Proteintech-CN@ptglab.com](mailto:Proteintech-CN@ptglab.com)

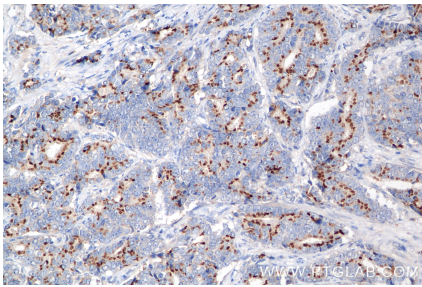
W: [ptgcn.com](http://ptgcn.com)

**This product is exclusively available under Proteintech Group brand and is not available to purchase from any other manufacturer.**

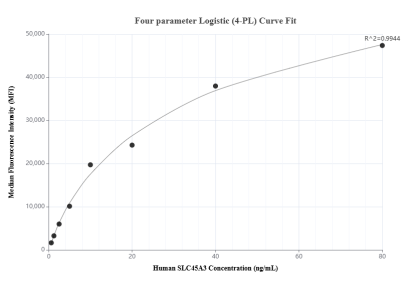
Selected Validation Data



Immunohistochemical analysis of paraffin-embedded human prostate cancer tissue slide using 84629-2-RR (Prostein antibody) at dilution of 1:200 (under 10x lens). Heat mediated antigen retrieval with Tris-EDTA buffer (pH 9.0). This data was developed using the same antibody clone with 84629-2-PBS in a different storage buffer formulation.



Immunohistochemical analysis of paraffin-embedded human prostate cancer tissue slide using 84629-2-RR (Prostein antibody) at dilution of 1:200 (under 20x lens). Heat mediated antigen retrieval with Tris-EDTA buffer (pH 9.0). This data was developed using the same antibody clone with 84629-2-PBS in a different storage buffer formulation.



Cytometric bead array standard curve of MP01440-1, SLC45A3 Recombinant Matched Antibody Pair, PBS Only. Capture antibody: 84629-1-PBS. Detection antibody: 84629-2-PBS. Standard: Ag5463. Range: 0.625-80 ng/mL.